

Work of Local Authorities Abroad

Local Road Safety Plan

Diogo Casaleiro

Road Safety Officer

Municipality of Mafra - Portugal



Presentation outline

1. Municipality of Mafra
2. Historic of Casualties
3. European Road Safety Charter
4. Road Safety District Coordinator Council
5. Portugal Road Safety Strategy
6. Cooperation with ANSR
7. The Guide for Road Safety Municipal Plans Elaboration
8. Mafra's Road Safety Municipal Plan
 - a) Knowledge
 - b) Analysis
 - c) Planning
 - d) Action
9. The Observatory
10. Conclusions

Municipality of Mafra



Population:

60,000 inhabitants

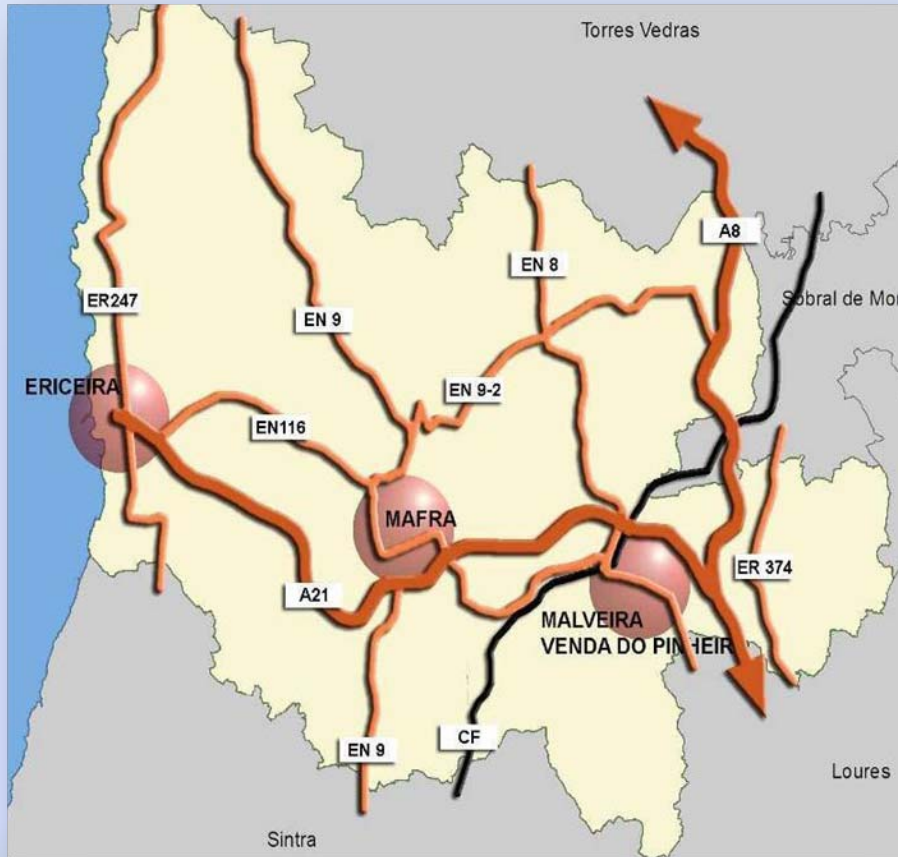
Road Length:

400 km of public roads

Points of Interest:

Mafra's Palace, Ericeira's Beach, Mafra's National Park

Municipality of Mafra



Road Network

Motorways (A8 and A21):
43 km

National Roads (EN9, EN8, EN116, ER 247 and ER 374):
120 km

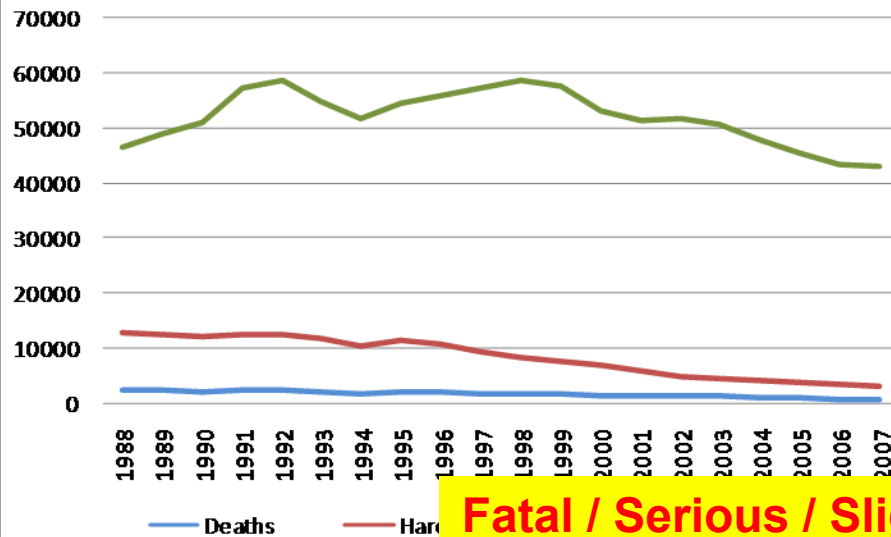
Municipal roads :
225 km

Development of road safety

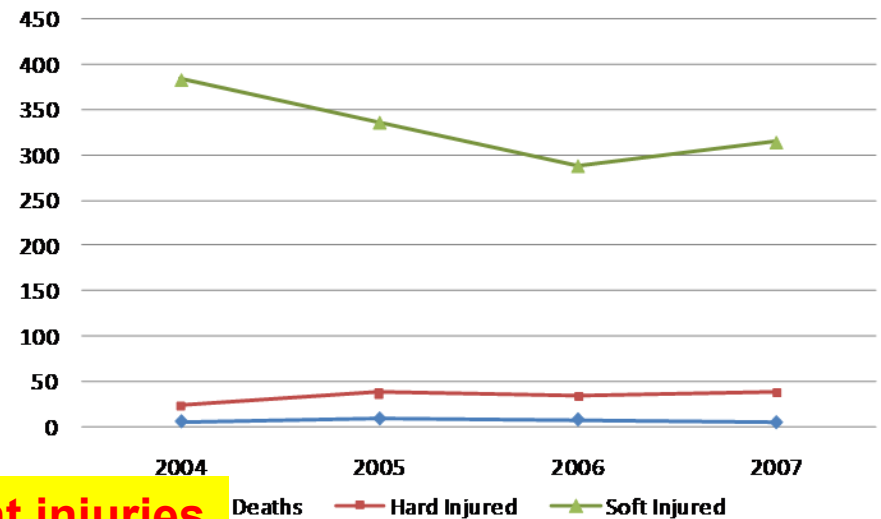
Portugal versus Municipality of Mafra

Development in road deaths in Portugal/Mafra
Better – relative development 1988=1

Casualty Evolution in Portugal



Casualty Evolution in Mafra



Fatal / Serious / Slight injuries

European Road Safety Charter

The European Road Safety Charter – *a great opportunity for:*

*to
aware*

*to
motivate*

*to
compromise*

*to
integrate*

Intents
????

Teams

Deciders

Entities

The Municipality signed the Charter in 2008;

Resulted in two specific actions:

- Elaboration of a Road Safety Municipal Plan (RSMP)
- Creation of a Road Safety Municipal Observatory (RSMO)

Road Safety Coordination Council

Founded in 2008

Composed by

- a) District Govern
- b) Police Forces
- c) Operational District Command
- d) Road Safety National Authority
- e) Medical Emergency Institute
- f) Infrastructures Institute

and the Municipalities.

Competences:

- a) Monitoring and Evaluation
- b) Awareness and supervision, in order to road safety culture and conduction good practices
- c) Training actions at schools
- d) National Strategy Operation

Portuguese Road Safety Strategy

A ANSR

A Estratégia

Implicações ao nível do município

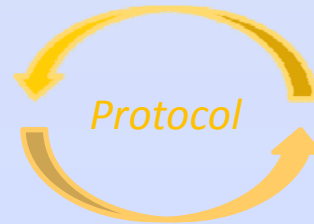
Links with ANSR

May 2008

Starts the elaboration of a Road Safety Municipal Plan

**September
2008**

The team concludes a “**draft version**” of the **first** municipal plan of this type in Portugal



October 2008

The “Pre-Plan” is submitted to the experts of **Road Safety National Authority (ANSR) for checking** after **Introduction/approval?** col

The suggestions of ANSR are introduced on the document, conducting it to a final version

January 2009

Presentation of the Plan (by Municipality) and **publication of a Guide for Elaboration** (by ANSR) for to help the other municipalities on their plans elaboration

Road Safety Municipal Plans

Descrição do Guia

A sua importância ao nível da orientação local

Road Safety Municipal Plan

KNOWLEDGE - Characterization of Road Network, Casualties Occurrence and Road Safety Indicators

ANALYSIS - Diagnostic and comparison

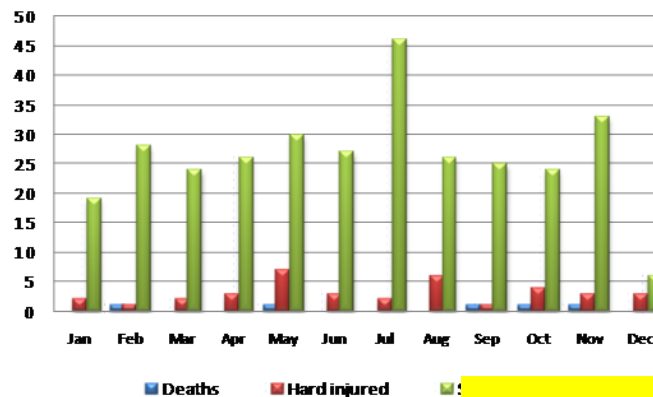
PLANNING – Definition of the objectives

OPERATION - Actions and measures: Education, Infrastructures, Supervision and Relief

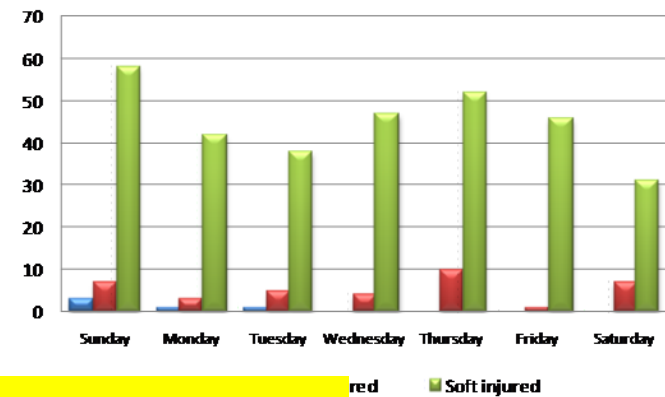
Evidence / evaluation

2007 Analysis about Municipality of Mafra

Monthly Casualty (2007)

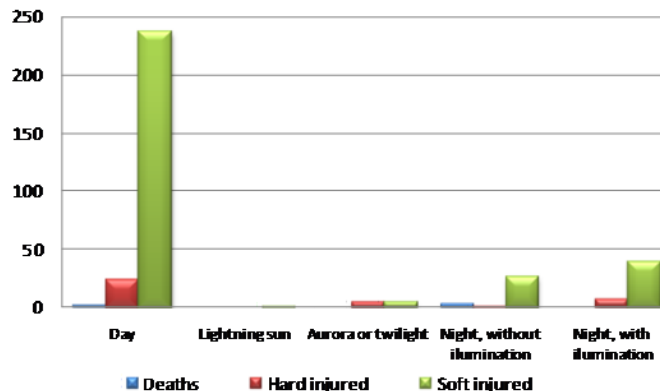


Weekly Casualty (2007 average)

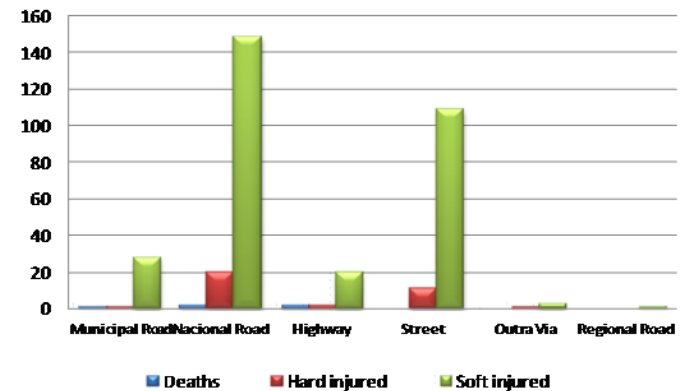


Deaths/serious/slight injury

Casualty by Day Period (2007 average)



Casualty by Type of Road (2007 average)



Analyses

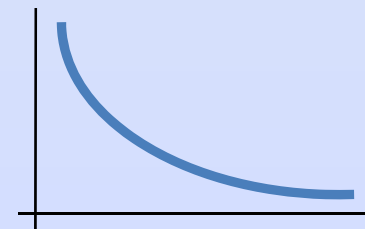
Casualty Indicator (CI)

$$CI = (100 \times \text{Fatal}) + (10 \times \text{Serious}) + (3 \times \text{Slight})$$

$$CI_{2005} = 2.268$$

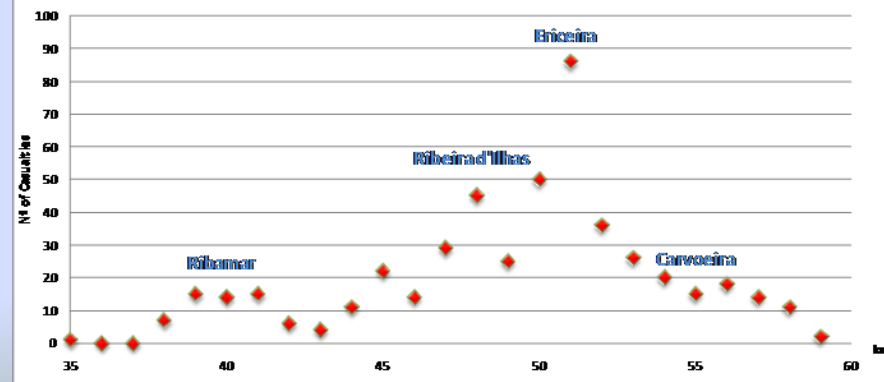
$$CI_{2006} = 1.994$$

$$CI_{2007} = 1.812$$



Distribution of casualties

Casualties in EN247 (2007)





Analyses

☐ Comparison with the other municipalities by:

- *the absolute values*
- *road safety indicators*

*The competition as
a mean to motivate
and to improve*



☐ Local analysis of accidents and their relation with the:

- *Infrastructure – surface, intersections, ...*
- *Flows*
- *Weather conditions*
- *Visibility and illumination*

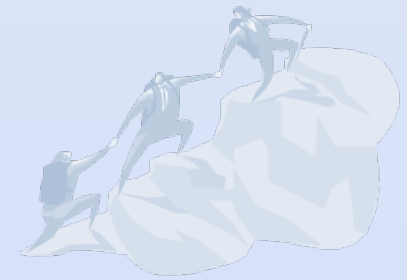


Planning



Objectives and Targets Definition

based on National Strategy and locally adapted



Quantitative

Ex.: 50% deaths reduction till 2012

Actuation???

Objectives

Strategic

Actuation

Ex.: Infrastructure, Circulation and Victims Emergency

Cooperation

Ex.: Drivers, Pedestrians, Security Devices

Operational

Actuation

Ex.: Traffic Calming, Awareness in Schools, Project Auditing

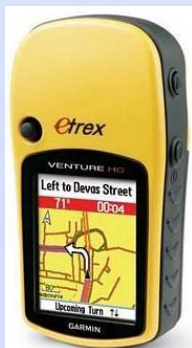
Cooperation

Ex.: Drive by Alcohol Influence, Day Running Lights

Operation

Fotos de Acções no
Terreno

Exemplos de Acções-Chave
Orçamento Anual



Available budget / personal??



Observatory

❑ Mission:

National/municipal?/

- Road System and Casualties Study
- Road Safety Plan Monitoring
- Terrain Intervention
- Municipality Support
- Research

❑ Constituted by the:

- Coordination and Assessment Structure (CAS) – “*cabinet team*”
- Technical Support Structure (TSS) – “*terrain team*”
- Consultant Group (CG) – *representatives of local forces and interests*



General approach

ROAD SAFETY – ONE STEP AT A TIME

- Mafra is the first portuguese municipality having a Road Safety Plan
- The cooperation with ANSR improved the Plan becoming it a guide to the other municipalities
- Only with a Plan, the municipality can do the right intervention in its territory, in a programmed, justified and sustainable way
- **We didn't wait for requested budget because the most important is to start with a small but motivated team**

Conclusions

The reduction of victims and accidents is a big challenge, only reachable by the concretization of smaller measures



**Like portuguese people say: “Grain by grain the chicken gets fat”
or “When the elephant is too big we cut it in smaller pieces”**

Thank you for the attention

Diogo Casaleiro
diogocasaleiro@cm-mafra.pt