

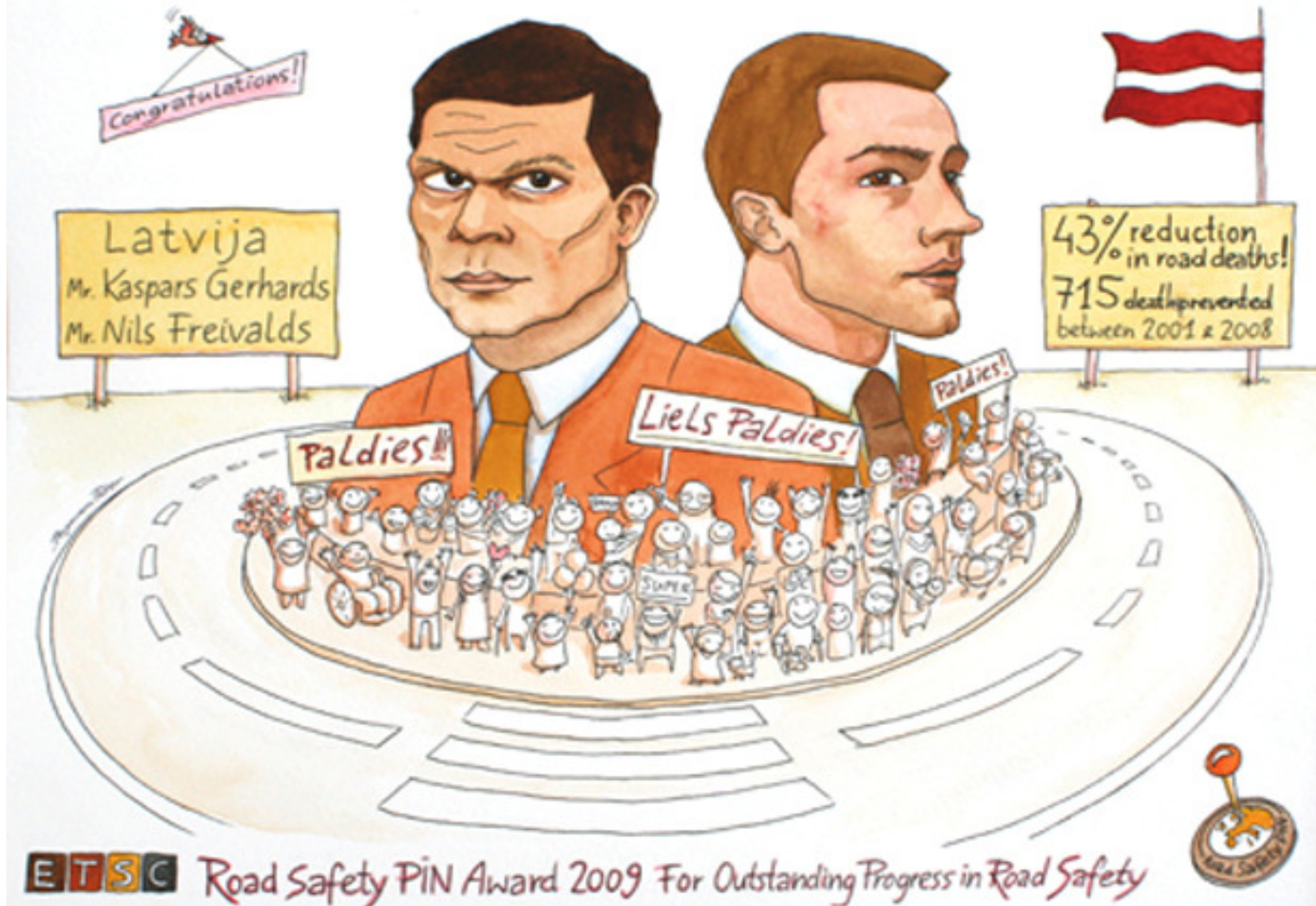


**Latvia one year after  
2009 Road Safety PIN Award**

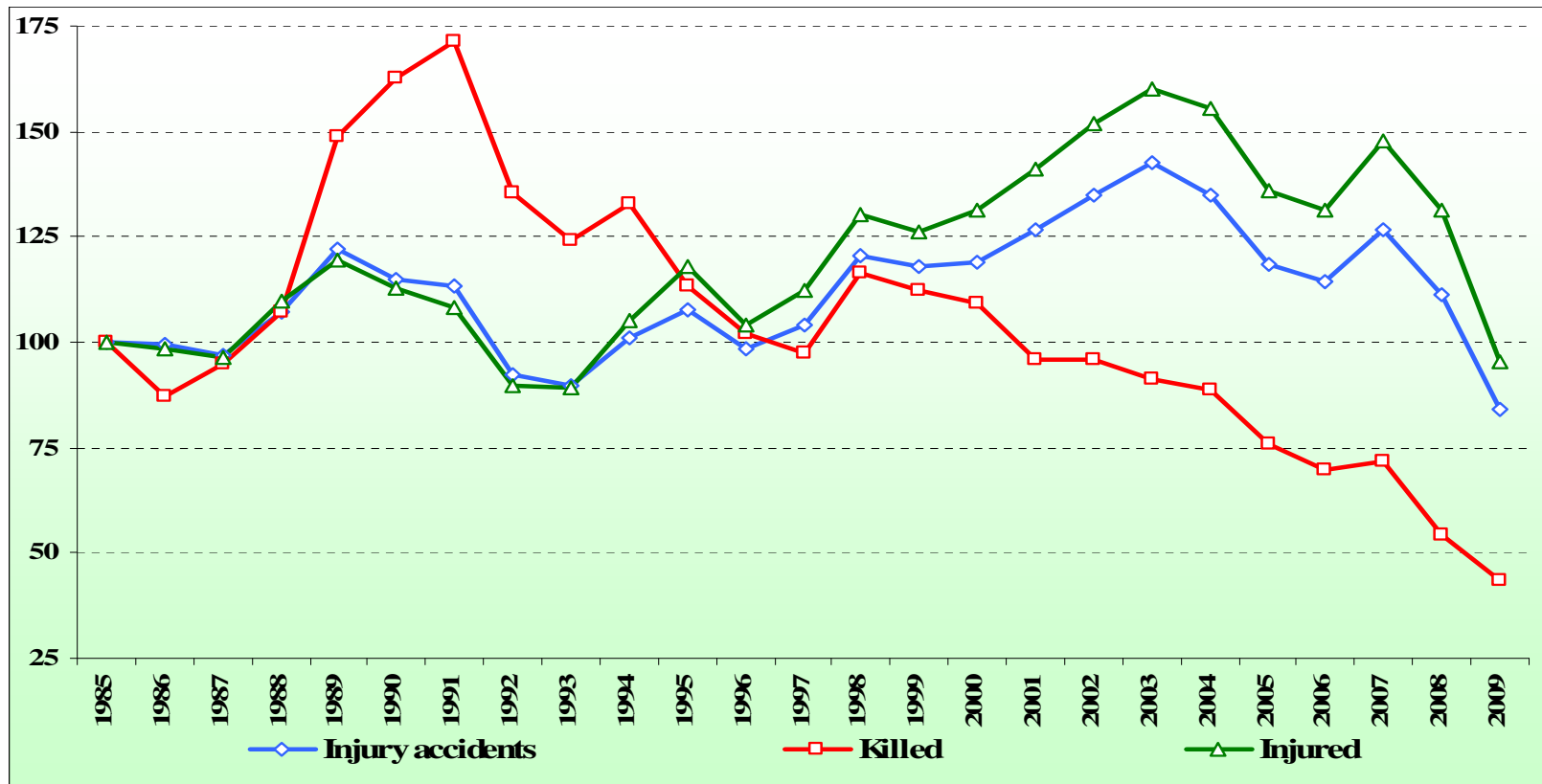
**Māra Tapiņa  
Director of Land Transport  
Ministry of Transport, Latvia**

# PIN Award 2009 to Latvia

## PIN Conference, 22 June 2009



# Road traffic safety indices in Latvia



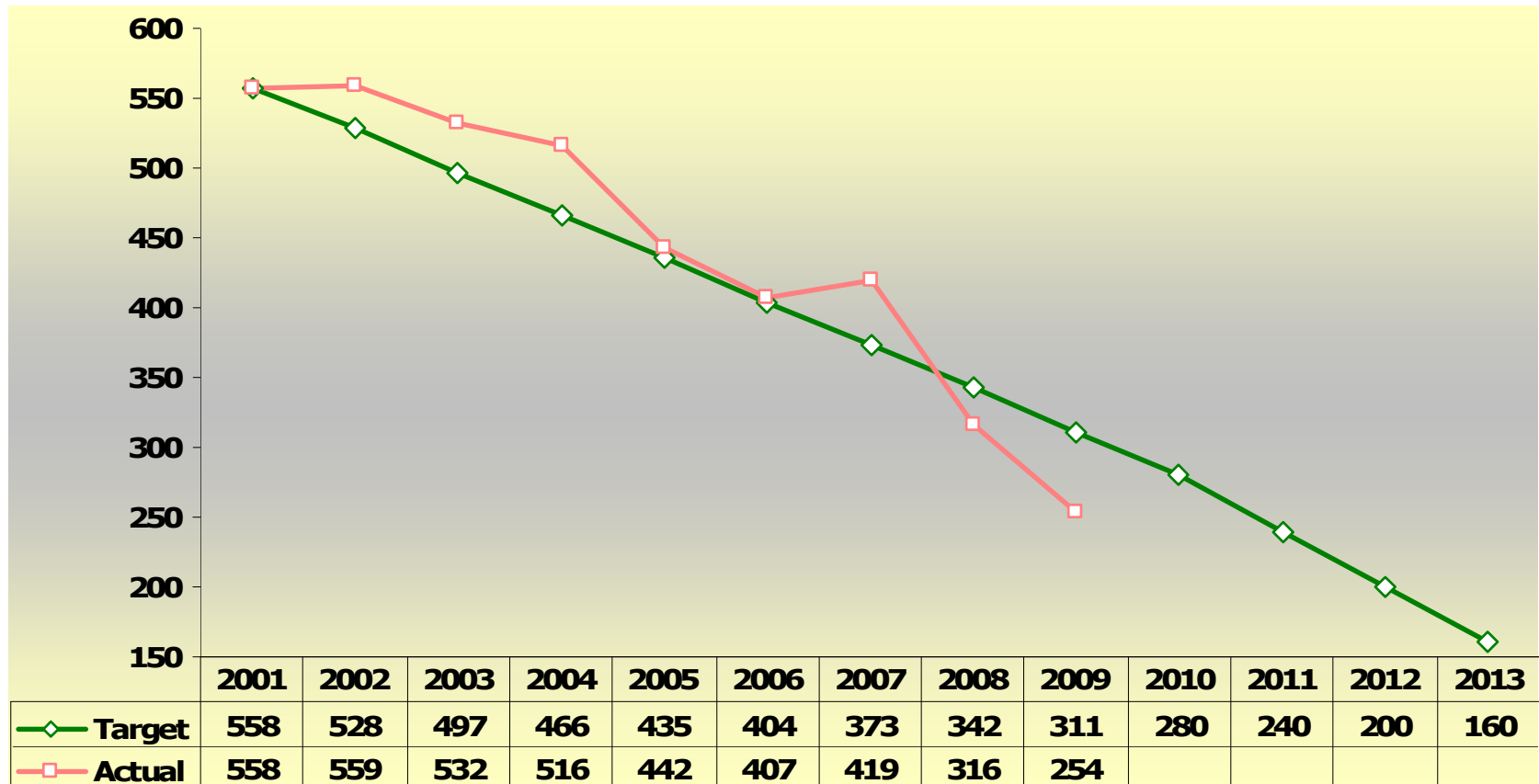
## 2009 compared to 2008:

- The number of people killed decreased by 20%
- The number of injured people decreased by 27%

## Number of people killed

	2008			2009			D(%)
	Driver/rider	Passenger	Total	Driver/rider	Passenger	Total	
Pedestrian	105			82			-21.9%
Bicycle	15	0	15	26	0	26	...
Moped	3	0	3	1	0	1	...
Motorcycle	10	4	14	7	3	10	...
Quadricycle	1	0	1	3	0	3	...
<b>Total (PTW+cycle)</b>	<b>29</b>	<b>4</b>	<b>33</b>	<b>37</b>	<b>3</b>	<b>40</b>	<b>21.2%</b>
Other vehicle	100	78	178	76	56	132	-25.8%
<b>Overall</b>	<b>129</b>	<b>82</b>	<b>316</b>	<b>113</b>	<b>59</b>	<b>254</b>	<b>-19.6%</b>

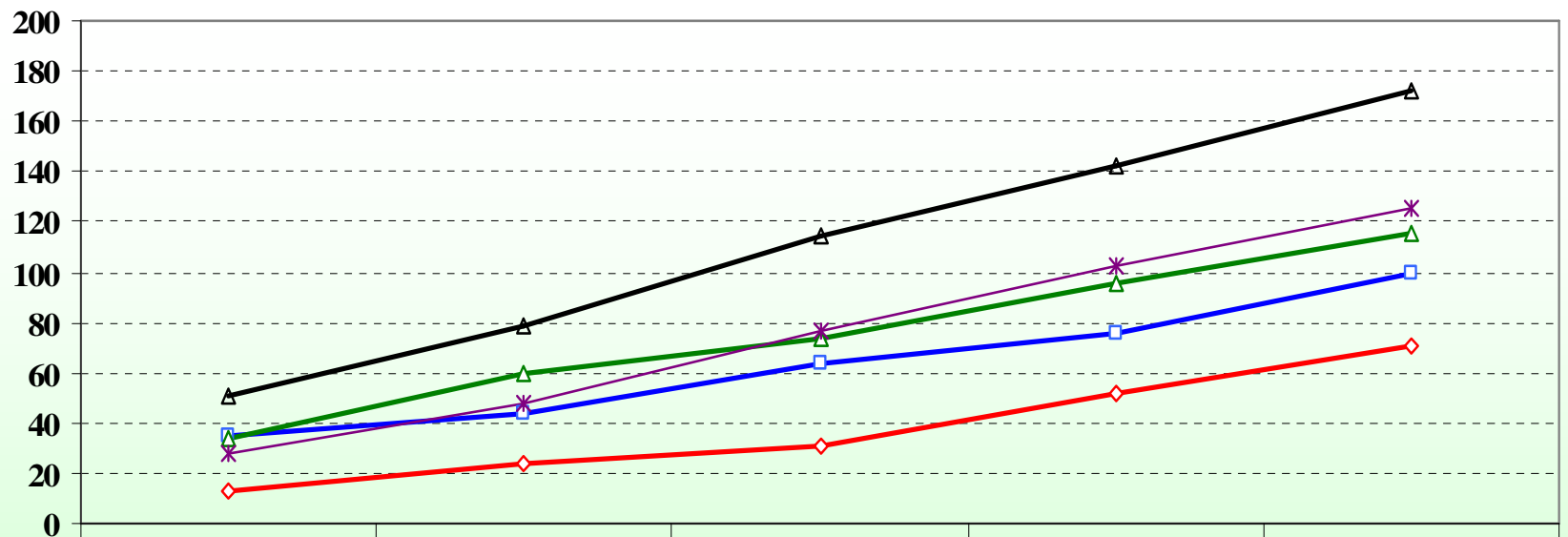
# Main goals and achievements



**254 persons were killed in 2009. The interim target of 2010 (of a max. of 280 people killed) is reached one year earlier.**

**The next challenge is to reach the target set for 2013 (of max. 160 killed people) earlier than 2013.**

# Quick indicator of killed people in January – May 2010



	January	February	March	April	May
◆ 2010prov	13	24	31	52	71
□ 2009	35	44	64	76	100
△ 2008	34	60	74	96	115
▲ 2007	51	79	114	142	172
* 2006	28	48	77	102	125

# Number of casualties in 2009

	Killed				Injured			
	Driver	Passenger	Total	%	Driver	Passenger	Total	%
Pedestrian	82			32.3%	873			22.2%
Car	67	49	116	45.7%	1048	1026	2074	52.8%
Other vehicle	11	5	16	6.3%	93	252	345	8.8%
Bicycles	26	0	26	10.2%	258	3	261	6.6%
Mopeds	1	0	1	0.4%	99	19	118	3.0%
Motorcycles	7	3	10	3.9%	199	37	236	6.0%
Quadricycles	3	0	3	1.2%	15	8	23	0.6%
<b>Total</b>	<b>115</b>	<b>57</b>	<b>254</b>	<b>100.0%</b>	<b>1712</b>	<b>1345</b>	<b>3930</b>	<b>100.1%</b>

15.7%

16.2%



## General future steps

**To achieve the main goal of year 2013 it is necessary to continue more intensive affectation of road users via:**

**Education** - to educate and to train the road users to behave safe as well as to create public opinion about safe behaviour;

**Enforcement** - to enforce road users to behave safely;

**Engineering** - to improve road infrastructure;

**eSafety** – to introduce the eSafety systems that help to solve the problems of road traffic safety as well as mobility and environment protection.





# **What is next important step?**

## **The implementation of speed cameras network**

- + The 2007–2013 road traffic safety programme declares that 100 speed cameras must be implemented by 2013;**
- + Four safety cameras were installed in July 2008 - it was a starting point;**
- + The tender for supply of 160 speed cameras is ongoing at the moment.**