

International PRAISE Seminar

Thursday | 18 October 2012 | Lisbon | 14h00

traffic accidents
Faça clique para editar o estilo
the trauma surgeon perspective

Nuno A. Ribeiro

Mapfre

890.000 traffic accidents in the U.E.

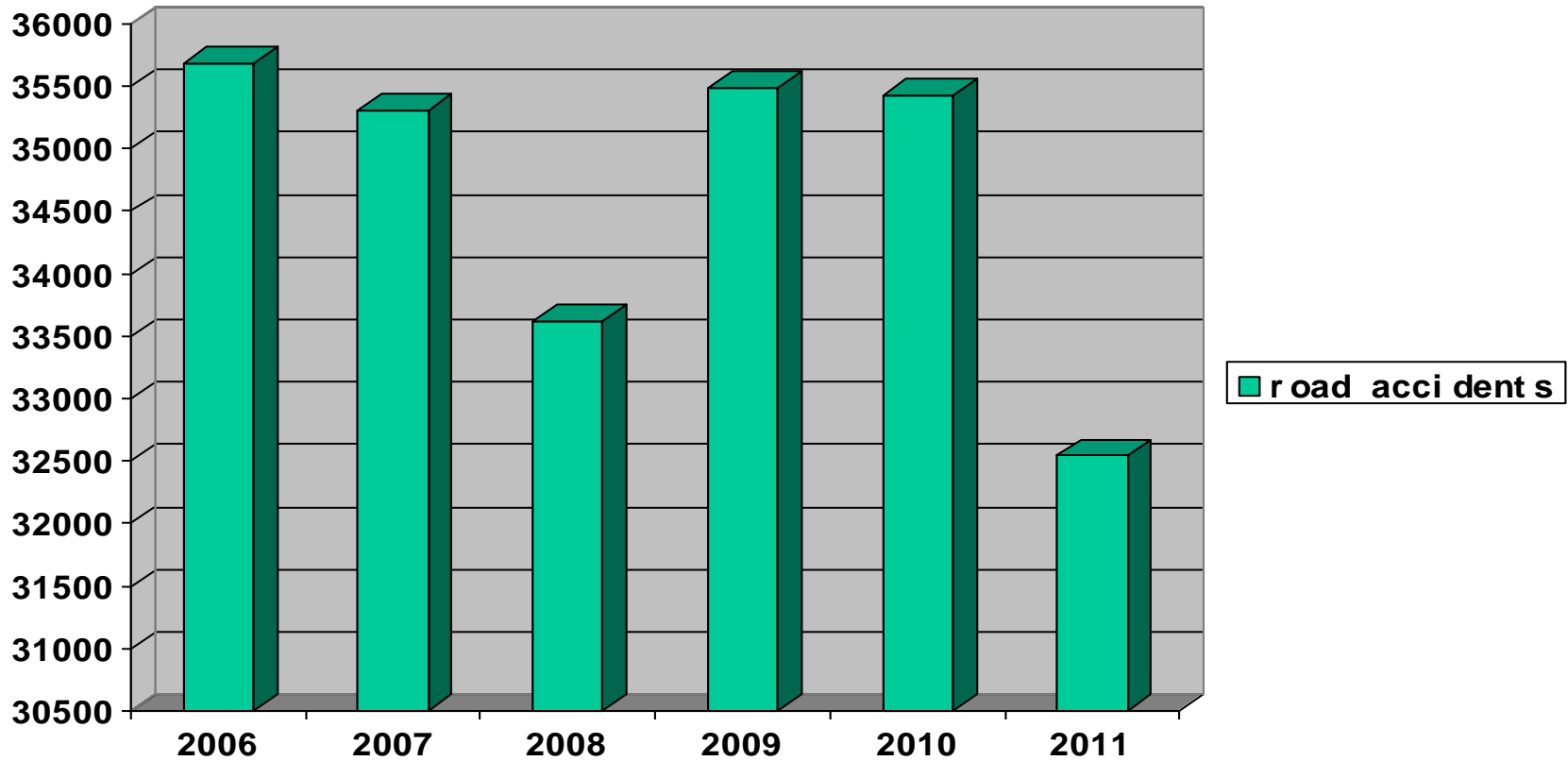
30.000 are fatal accidents

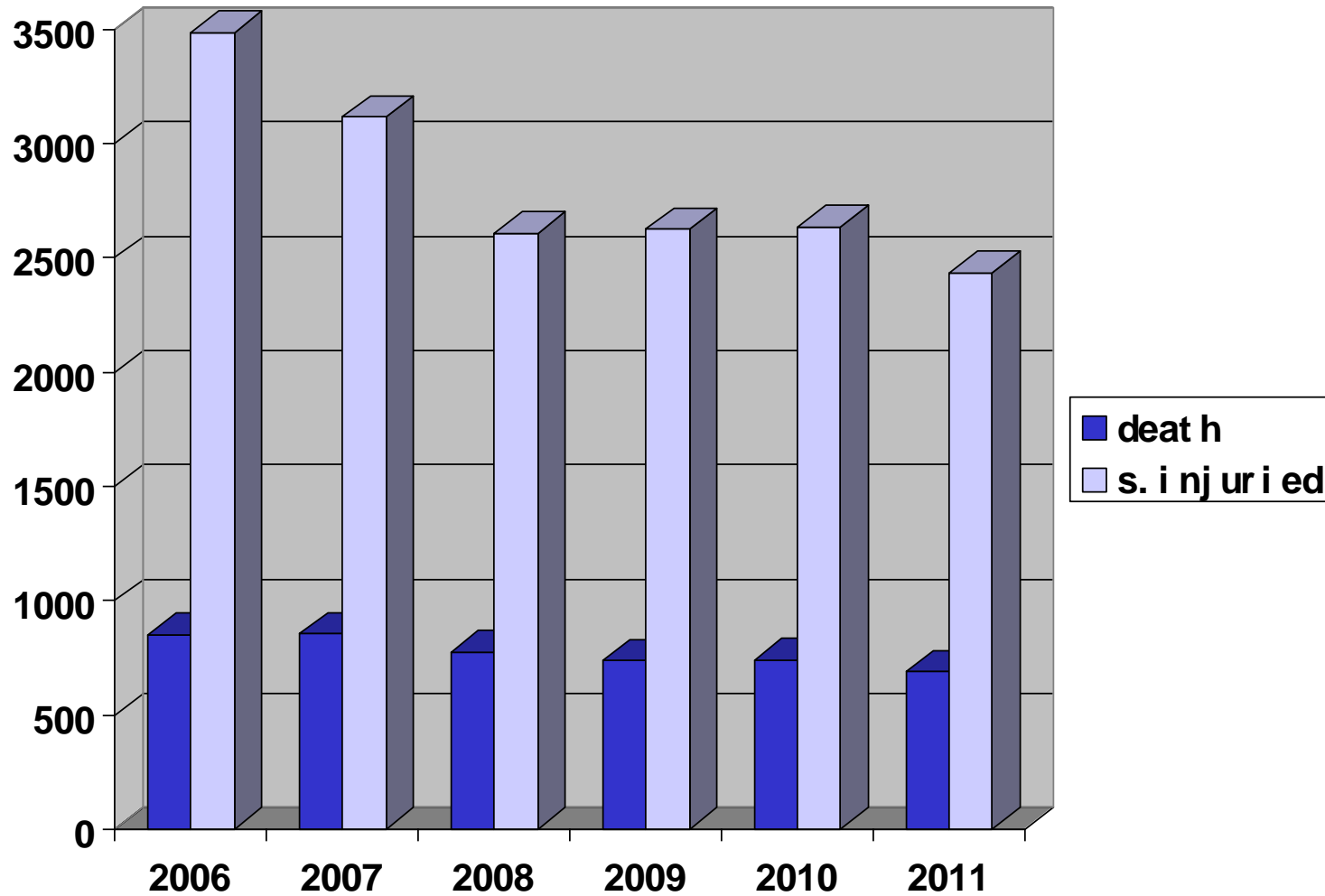
(CARE, 2006)

In Portugal (2004) 39.000 traffic accidents
1300 fatal

3,6 deaths per day as a result of road
accidents

(CARE, 2006)





severe injuries:

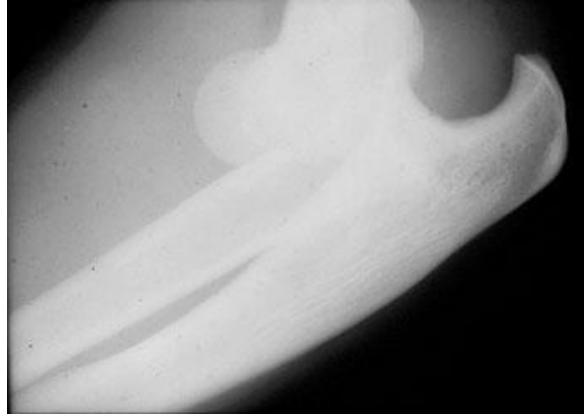
- monotrauma patient
- polytrauma patient = multiple injured patient

(injuries in at least two anatomical areas in association with vital risk)

- spine injuries

monotrauma injuries







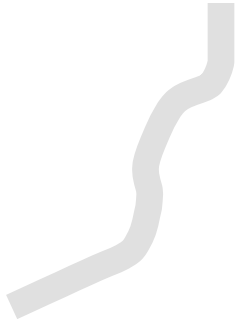
polytrauma injuries

multiple injured patient (multiple organ injury)

A

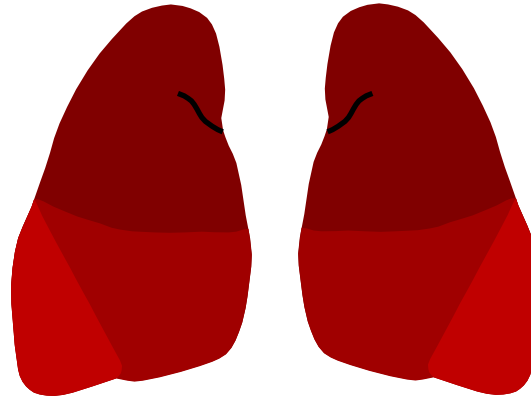
“Airway”

Clearing up



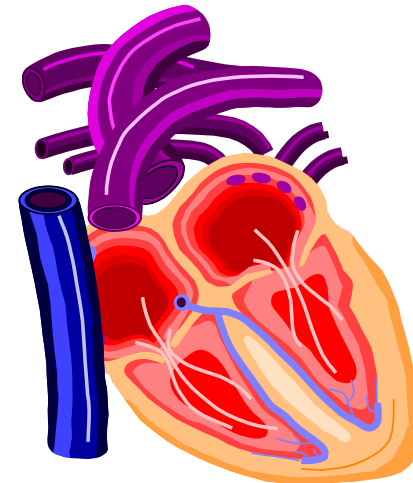
B

“Breathing”



C

“Circulation”

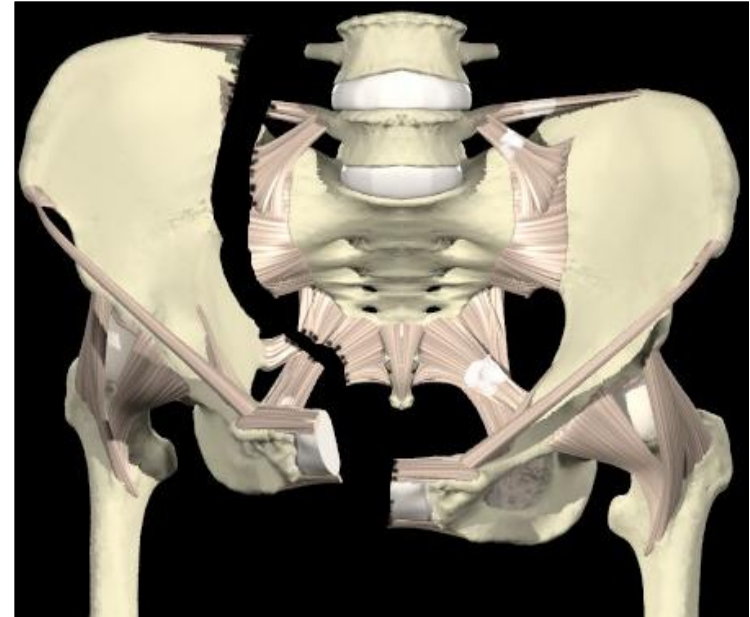


“the inicial treatment of a polytrauma patient will define the possibility of survival”



ICU

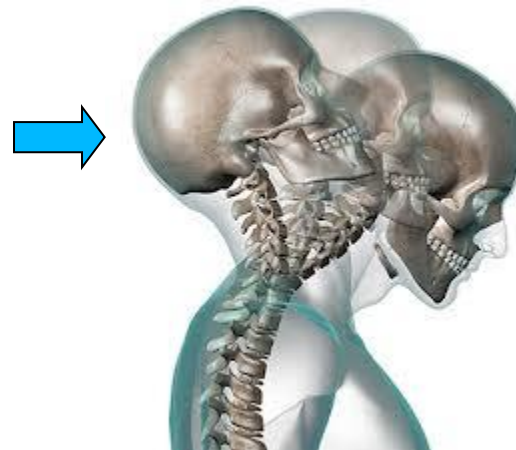
polytrauma injuries

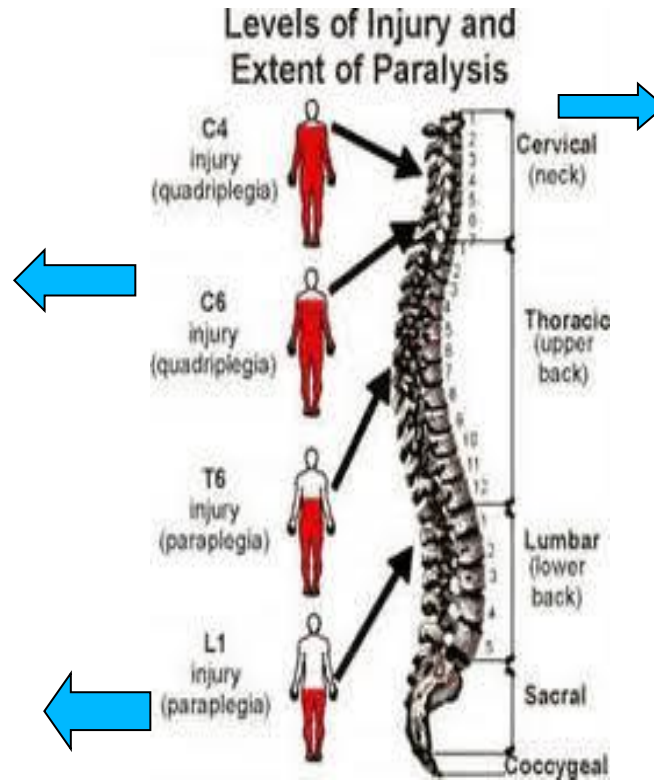






spine lesions





unable to sustain an upright trunk position





“Road traffic accidents (RTAs), traffic collisions, auto accidents, road accidents, personal injury collisions, motor vehicle accidents (MVAs),

kill an estimated 1.2 million people worldwide each year”



And that is only part of the story...

Please drive safely

Thanks Obrigado!



FUNDACIÓN MAPFRE