

# High Risk Site

# Krakowska Street, Nowy Sacz

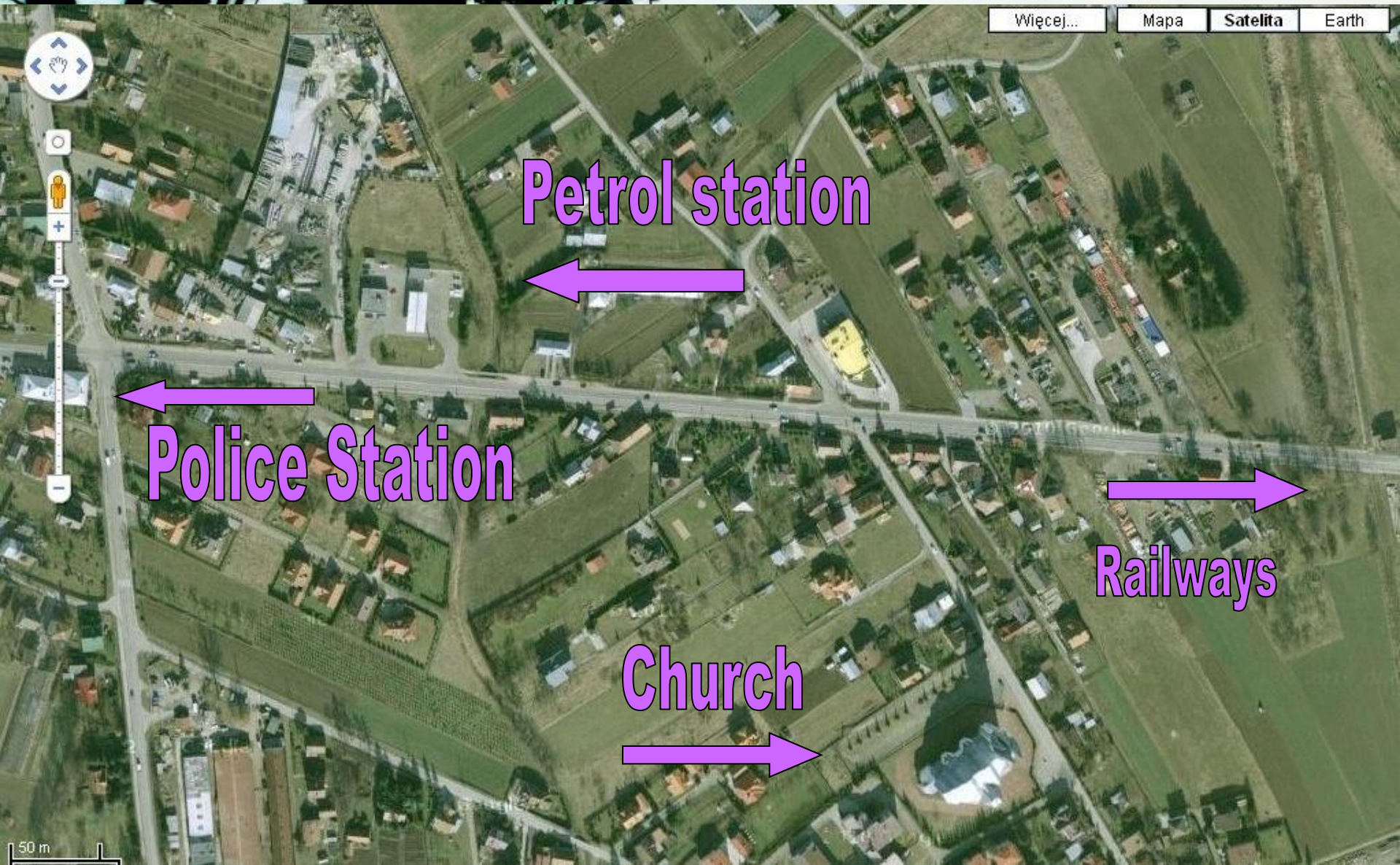
R2R Camp Brussels 2010



**Maciej Geroch**  
**Cracow University of Technology**

[maciej.geroch@gmail.com](mailto:maciej.geroch@gmail.com)

# Localization



# Road risks

> Several private and commercial drive-ins to main road









**Pedestrian crossings**

**Bus stops**



50 m



# Consequences



**NOX-POL** Sp. z o.o.  
załudni  
KIEROWCÓW (C+E)

**KN 37706**

KNS 05942

# Road risks





**weird bituminous forms**





**NOX-POL Sp. z o.o.**  
zatrudni  
KIEROWCÓW (C+E)  
GSM 661 999 301

**TELBEKID INTERNET**  
6 miesięcy - 29,  
NAWIGACJA - 12,  
AL 77 77 07

**Bajkoland**

**eko**

**FUNDUSZE**

**SUPERMARKET**

**Parking**

**KLUBY**

**Artysty szkolni**

**MAN**  
2000

**Volvo**  
KN 43110

**NAL 5300**

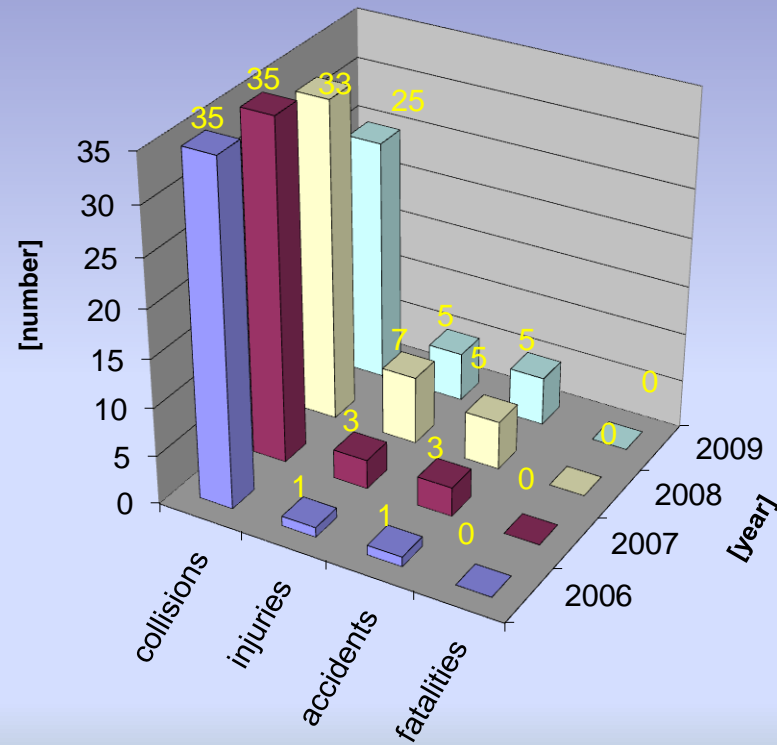
**Transfer**

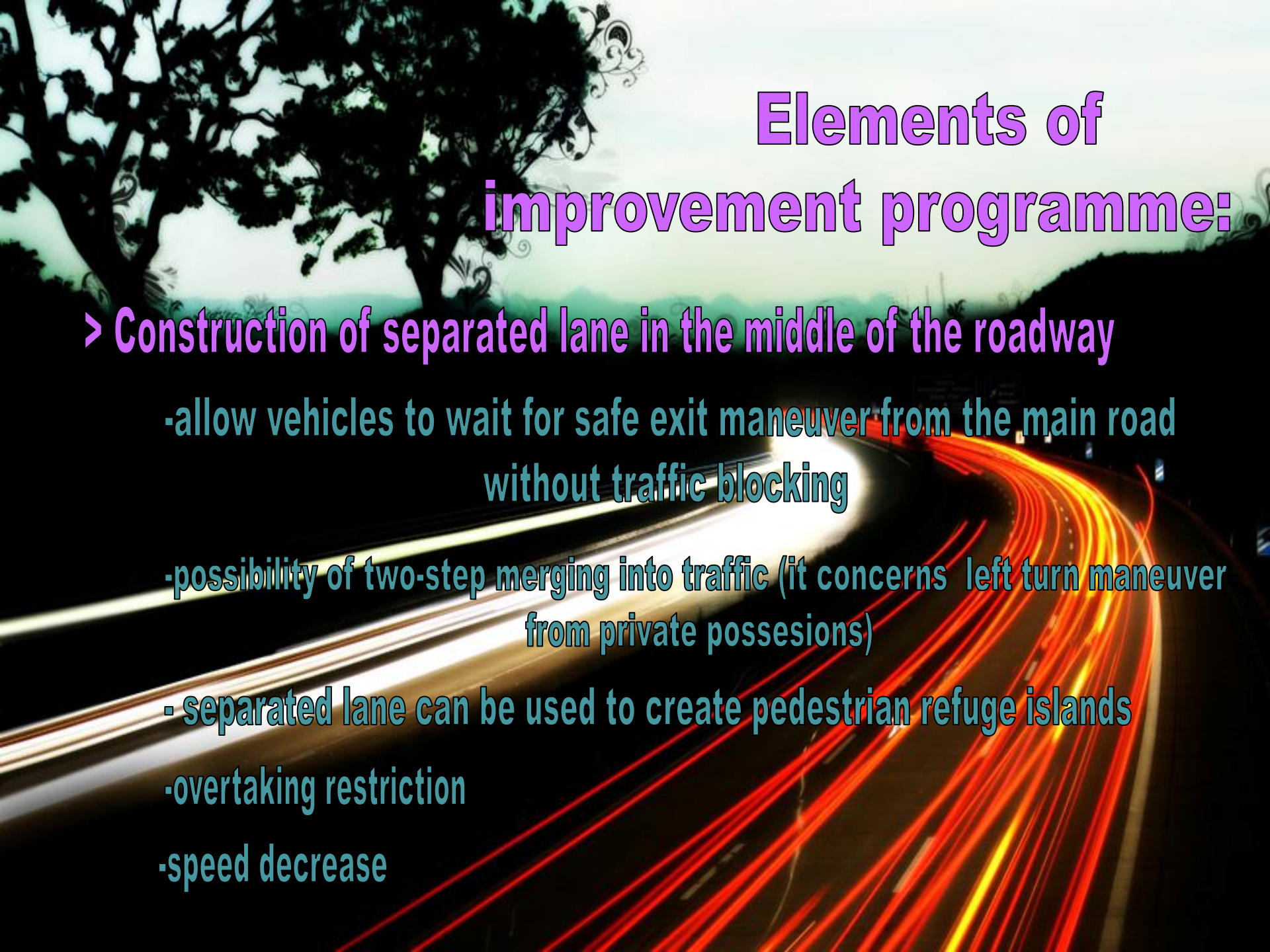
**Województwo**

# Accidents data

## Accidents and collisions data

source: Traffic Division of Police Department in Nowy Sacz






# Elements of improvement programme:


- > Construction of separated lane in the middle of the roadway
  - allow vehicles to wait for safe exit maneuver from the main road without traffic blocking
  - possibility of two-step merging into traffic (it concerns left turn maneuver from private possessions)
  - separated lane can be used to create pedestrian refuge islands
  - overtaking restriction
  - speed decrease





# Elements of improvement programme:

- > Elimination of dangerous stop lanes
- > Technical condition improvement of surface layer, bus bays, curbs, drainage, sidewalks
- > Separation of bike paths (if there will be enough space)
  - > Low cost alternative: left-turn bays construction on junction and in front of petrol station with refuge islands for pedestrians)

The background of the slide features a long-exposure photograph of a road at night. The road curves to the right, with bright white and yellow light trails from headlights and taillights. In the upper left corner, there are dark silhouettes of trees and decorative white scrollwork. The overall color palette is dark with vibrant light trails.

# Elements of future campaign:

- > Cooperation with Police Department and road administrator
- > Support of experts (professors, ETSC)
- > Talks with stakeholders and local authorities
- > Debate at the local level with media support (local press or radio)
- > Leaflets or posters for inhabitants with datas and proposal of solution

**There should be no such views!!!**







**THANK YOU FOR ATTENTION**