



Alcohol interlocks in public transportations

Safe and Sober Transport
Alcohol Interlock Seminar
31st May 2012, Barcelona

Kimmo Pylväs
Senior Officer
National Police Board Finland





Statistics (Finland)

- 3,5 million driving licences / 5,4 million inhabitants
- 4,7 million vehicles in traffic / 5,1 million in the register
- Alcohol is involved in every fourth lethal road traffic accident
- Each year approx. 26 000 drivers driving under the influence of alcohol get caught
- In the traffic flow each 600. driver's BAC is over the legal limit (0,5 ‰)





Alcohol Interlock program for DUI offenders

- Since 1st July 2008 a permanent program
 - A trial was carried out on 1st July 2005 – 30th June 2008
- Voluntary program (instead of a driving ban)
- The court will decide the length of the program for each driver (1–3 years)





Vehicles used in school and day care transportation

- In the 21st century over 20 DUI cases (in school transportation) have ended in the newspapers
- Decree on school and daycare transportation recommended alcohol interlocks to be installed in all vehicles used in school and day care transportation (August 2006)
- Alcohol interlocks should be made mandatory in school and day care transportation (Governments statement 2009)
- Alcohol interlocks mandatory by 2014 in all transport services paid by public funds (National intelligent transport strategy 2009)





...continues

- New act on the use of alcohol interlocks in school and day care transportation entered into force on 1st August 2011
- Alcohol interlock is mandatory in all vehicles used in school and day care transportation arranged and paid by public funds
- The number of alcohol interlocks in use in professional transportation is now estimated at around 8000





Future plans

- The experiences of professional drivers on alcohol interlocks were surveyed and the study: "Adoption of the alcohol interlock and its effects in professional transport" was published on May 2012
- According to the study 61 % of the respondents considered alcohol interlocks to be useful in professional transport, 81 % of respondents would be prepared to extend the obligation to use alcohol interlocks to all transportation
- The goal is to obligate the use of alcohol interlocks in
 - all transport services paid by public funds (incl. scheduled passenger traffic)
 - professional/commercial transport of goods

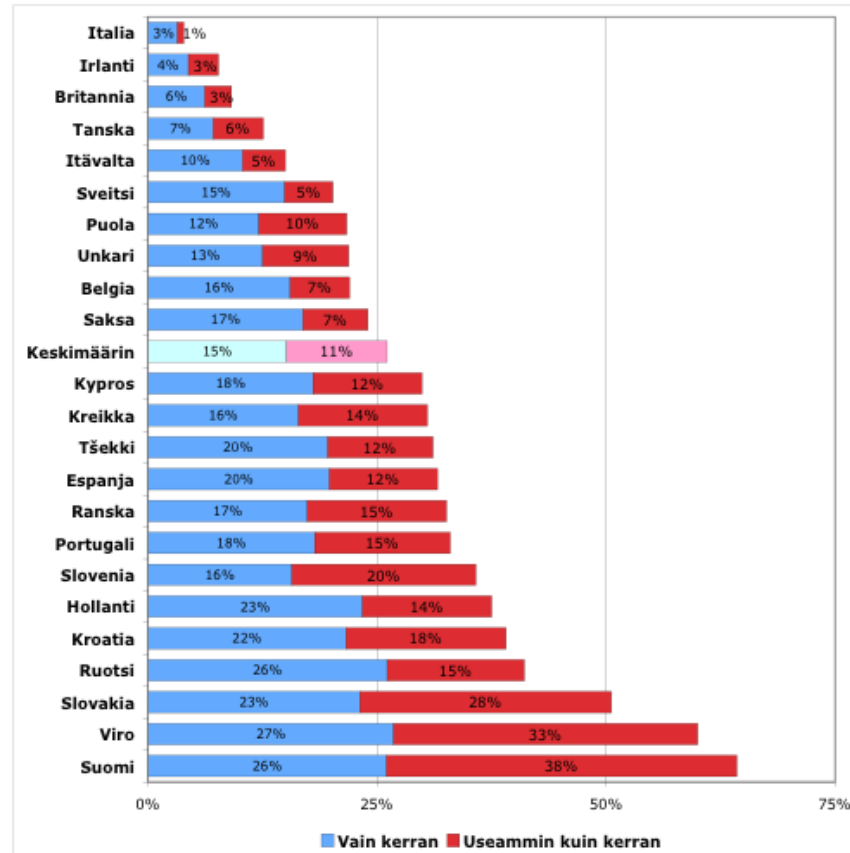
Source:http://www.trafi.fi/filebank/a/1329478826/017fc1d7b3316831e6a426019aca4c94/9294-Trafin_julkaisu_01-2012_-_Alkolukon_kayttoonotto_ja_vaikutukset.pdf



Alcohol interlocks from the police perspective



Sartre research 2004: tested drivers during past three years

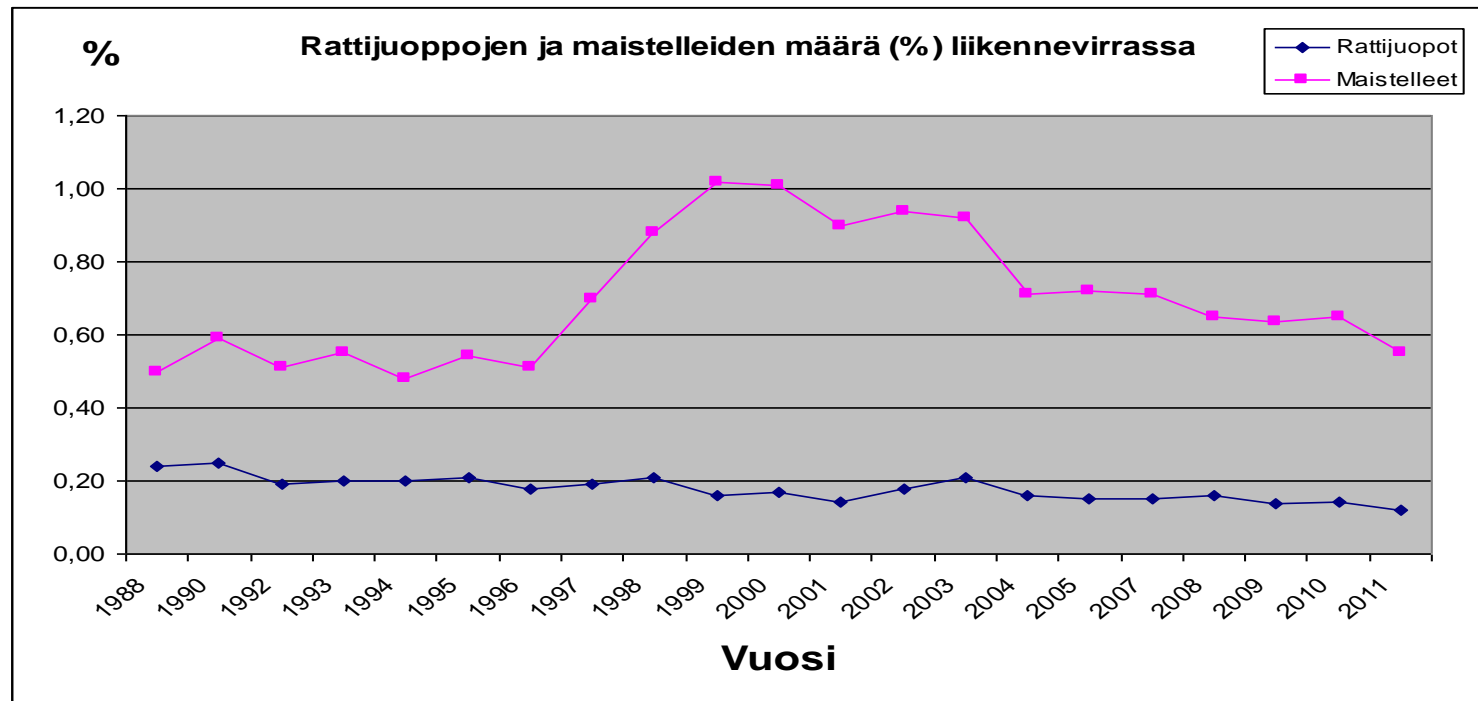


Picture source: <http://sartre.inrets.fr/>



continues...

- Finland, Norway and Sweden are most active, with respectively 429, 367 and 287 drivers checked per 1,000 inhabitants in 2010 (Drink Driving: Towards Zero Tolerance, ETSC publications, April 2012).
- Number of DUI cases (blue line) has not significantly changed during past 20 years





Future

- Still increase subjective / objective risk of detection
 - analysed information as a basis of targeted enforcement actions
 - high number of tests
- Effective and practical equipment
 - **Alcohol interlocks for drink drivers**
 - **Alcohol interlocks in all new cars**
 - Evidential breath testers and efficient screening devices on the road side
- Cooperation with other stakeholders
 - Most of drunken drivers have a drinking problem - more efficient cooperation with social and health care and other stakeholders
 - Attention to be paid for alcohol consuming before driving license
 - test period with social care authorities where drink driver meet social worker in 24 h after detection
 - Improvement to refer drink driver to get help for problems



Thank you!

