



Drink driving in Belgium

ETSC Safe & Sober talk

Alcohol interlocks: towards a European approach to enhance the fight against drink driving?

Brussels, September 5th 2013

Dr. Peter Silverans, Belgian Road Safety Institute



Overview

- | (Under)registration of DUI in Belgium:
 - | Official accident statistics vs hospital studies
 - | International comparisons

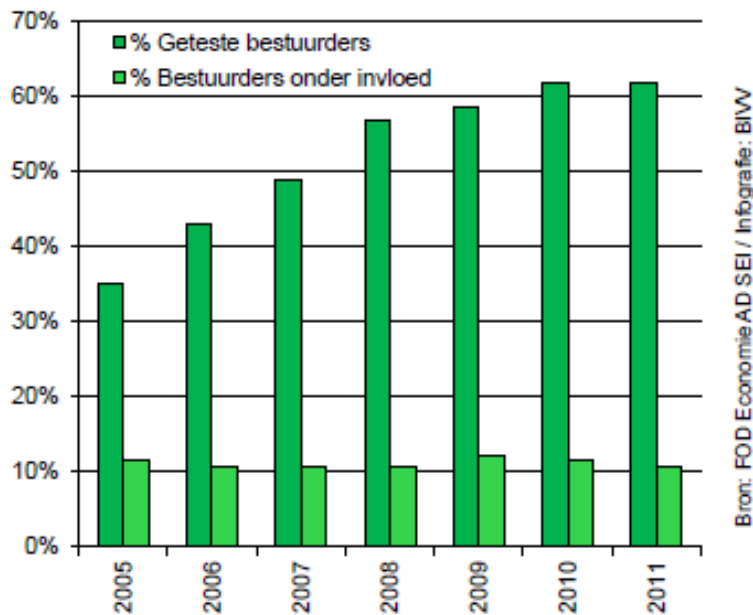
- | Prevalence in the general driving population
 - | Parameters associated with DUI in Belgium
 - | International comparisons
 - | Prevalence of DUI
 - | (Lack of) correlation between DUI and police checks

- | Conclusions and recommendations

Accident data

=> Most recent data : 2011 (official accident registration)

Evolutie van het percentage geteste bestuurders en het percentage positief bevonden bestuurders in letselongevallen (gewogen)



Incomplete data:
nowadays only
about 60% tested

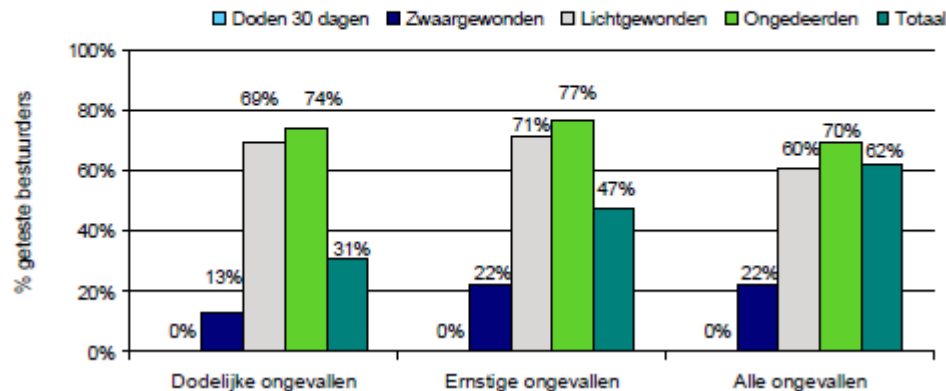
Percentage of
intoxicated drivers
about 10%

Underestimation
compared to other
data sources (ETSC,
ERSO, DRUID, ...)

Underregistration of DUI in accident data

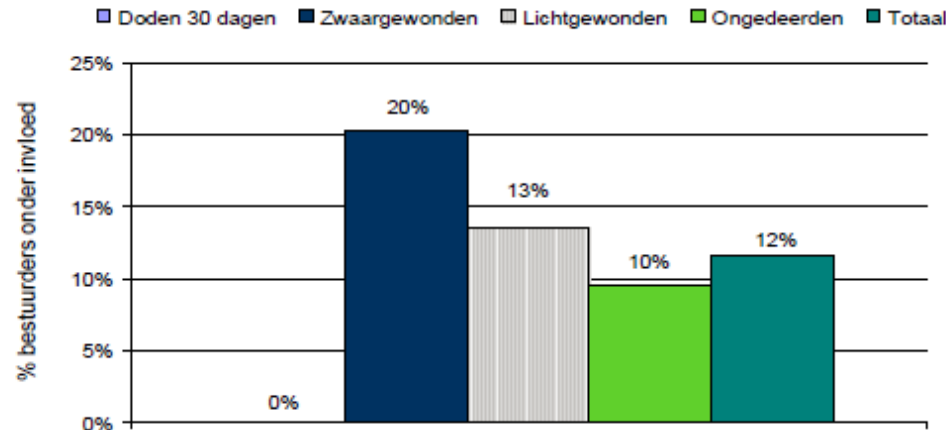
=> Underregistration as a function of accident severity (2010)

Het percentage geteste bestuurders in dodelijke, ernstige en alle letselongevallen naargelang de graad van verwonding van de bestuurders – 2010 (gewogen cijfers)



Bron : FOD Economie AD SEI / Infografie : BIVV

Het percentage positief bevonden bestuurders naargelang de graad van verwonding van de bestuurders – 2010 (gewogen cijfers)



Bron : FOD Economie AD SEI / Infografie : BIVV

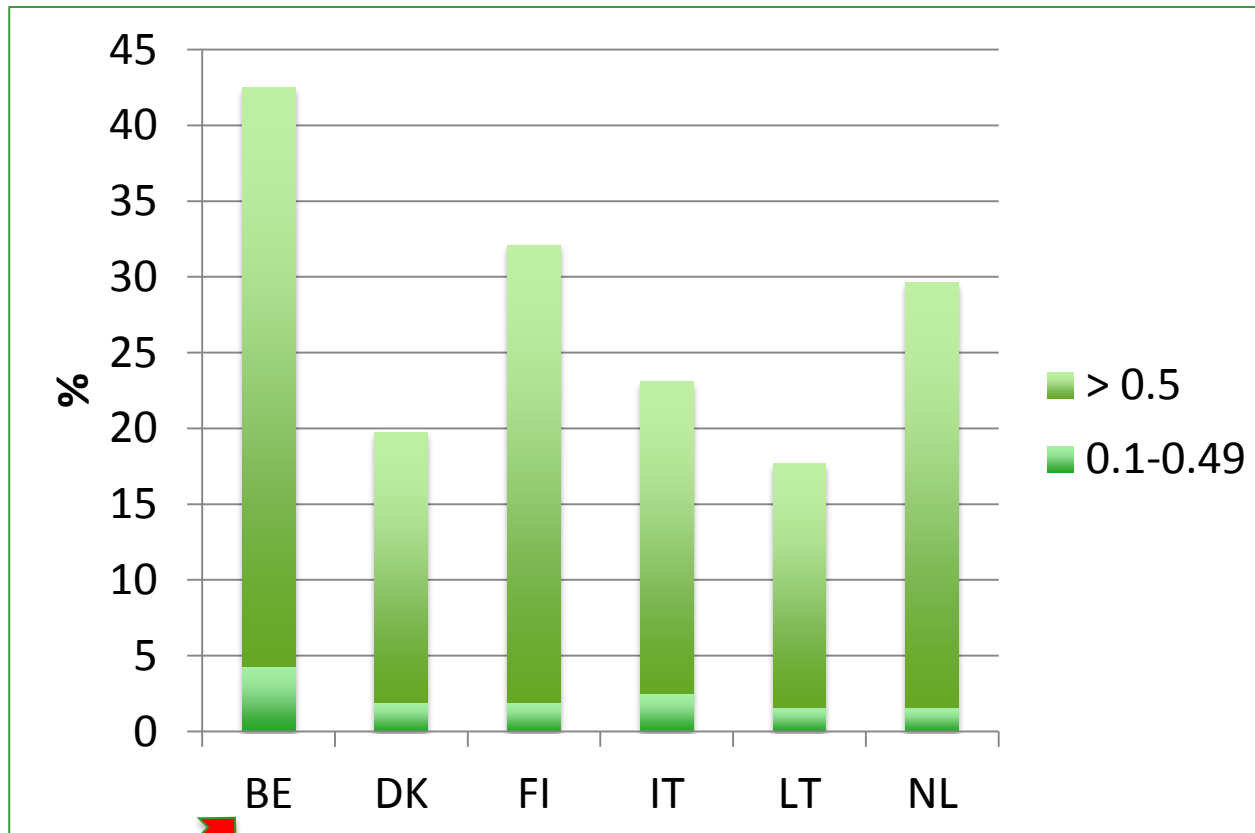
% tested = 0% for fatalities, 22% for severely injured

Difficult to demonstrate clear relation between injury severity and DUI

Overall estimate for severely injured: 20%

Underregistration of DUI in accident data

=> Comparison of accident data with DRUID hospital data



2008-2010

5 hospitals

MAIS \geq 2

Belgium: \pm 1000
injured drivers,
 \pm 400 car drivers

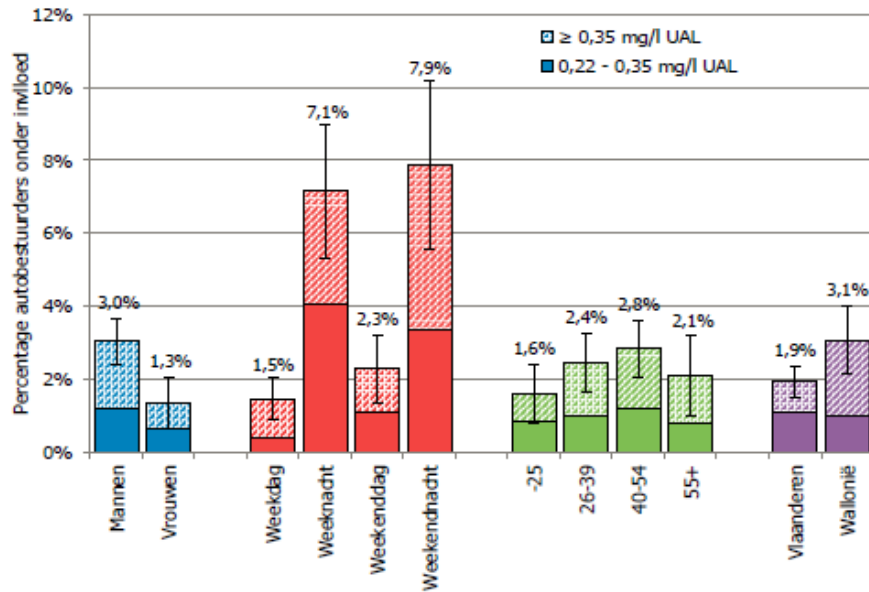
40% of severely
injured drivers in BE
were under the
influence of alcohol

Conform ETSC and
ERSO estimates

Prevalence in the general driving population

=> Estimates from the national road side survey series

Prevalentie van rijden onder invloed onder autobestuurders, volgens verschillende variabelen (2012)



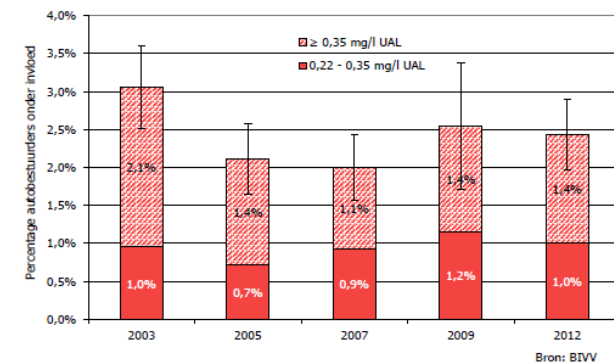
Conducted in collaboration with local and federal traffic police

N > 10.000 car-drivers for each survey

Overall estimate weighted according to traffic volume/time of day/week

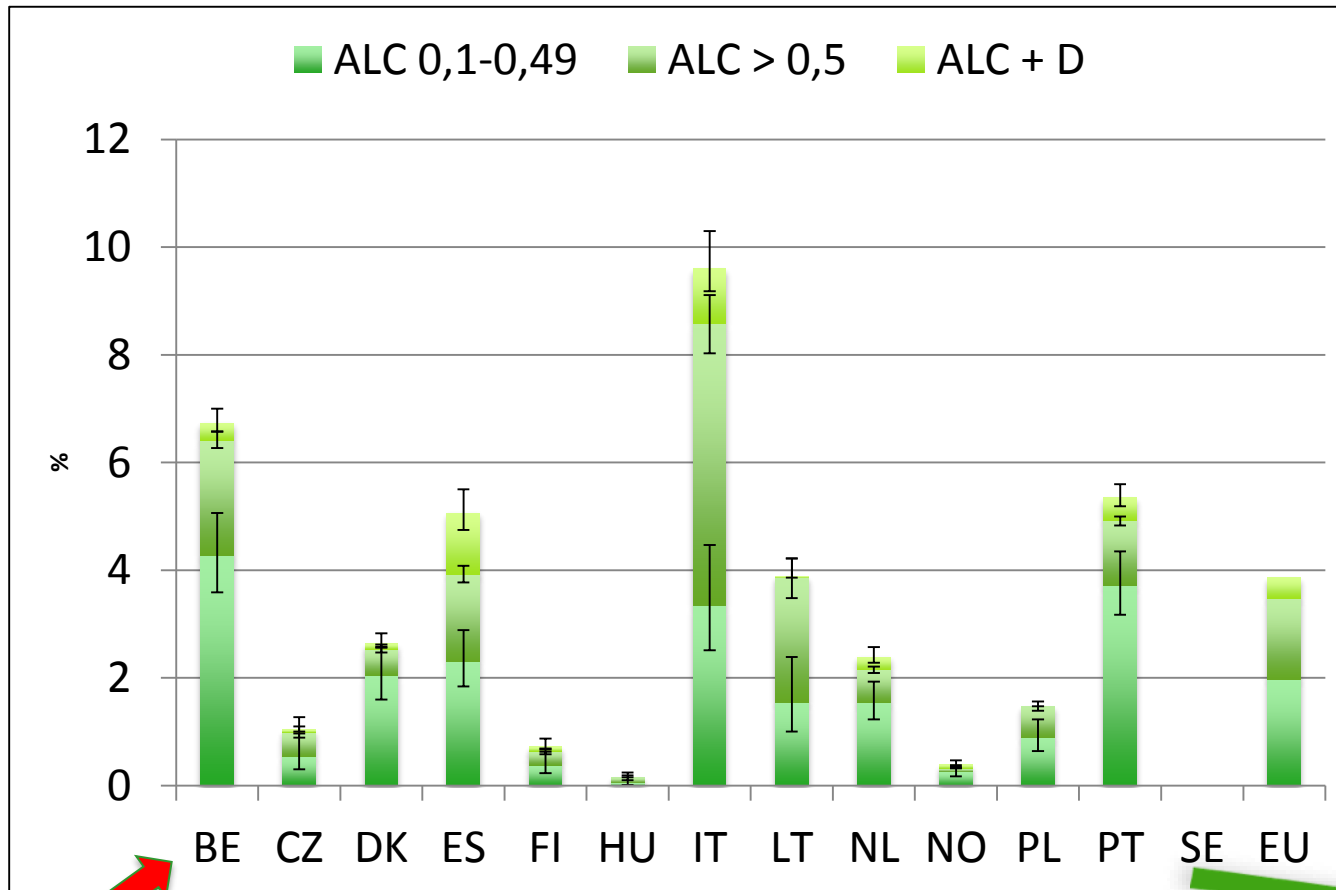
No improvement of behaviour over the last decade

Ontwikkeling van de globale prevalentie van rijden onder invloed onder autobestuurders



DUI in Belgium compared to other EU countries

=> Observational data: DRUID (2008-2010)



Road side survey from random police checks

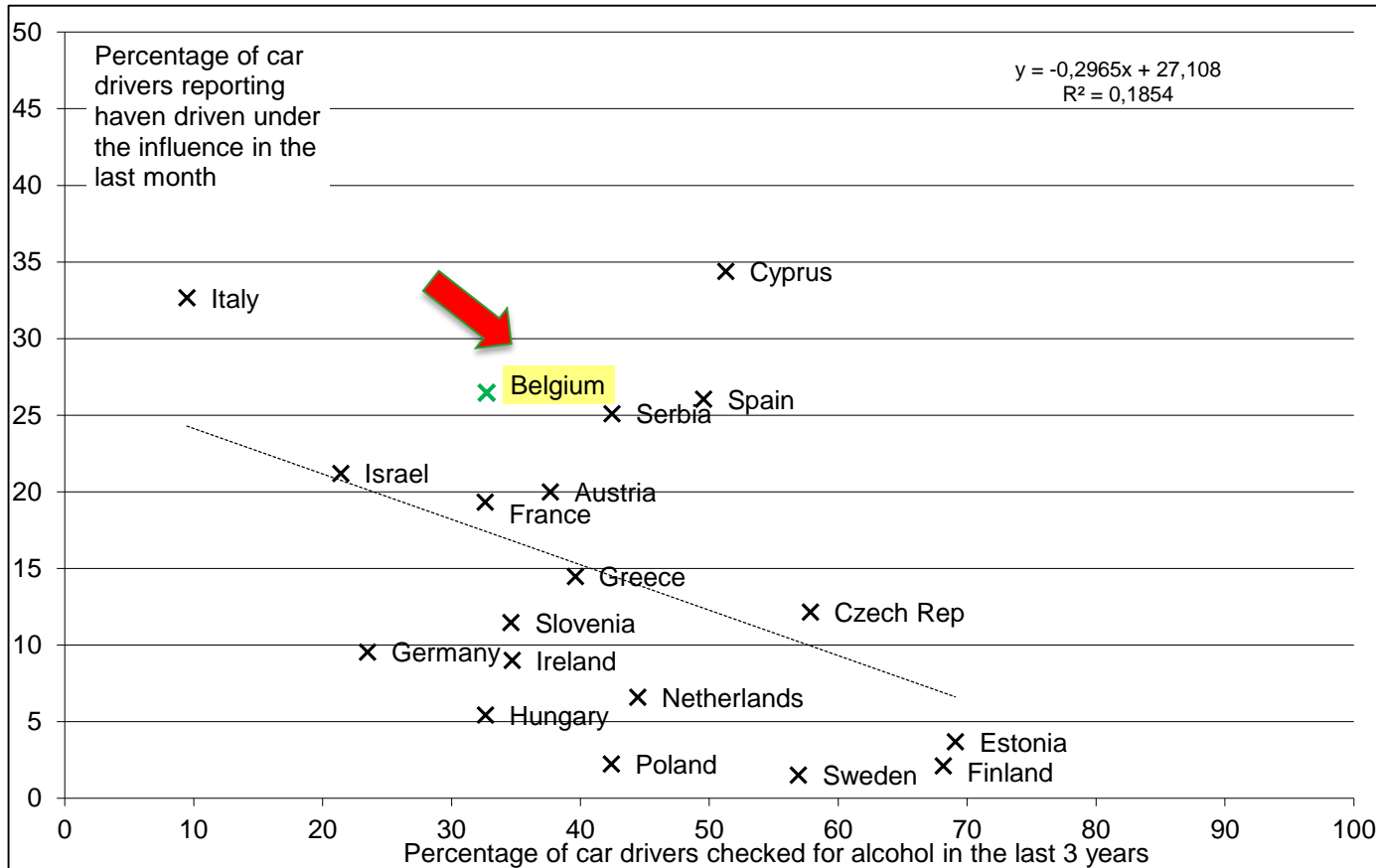
Observed data of 50.000 drivers

BE = 2949

Prevalence weighted by traffic/time of day/week

DUI in Belgium compared to other EU countries

+ correlation with number of alcohol checks (Sartre)



12500 interviews with car drivers in 19 countries, survey 2010

Probability to get checked slightly below average: 32%

Relatively weak correlation => other factors (e.g. social norms, social attitudes, sanctions, ...) currently investigated

Summary and conclusions

- | DUI remains a major road safety issue in Belgium
- | Despite progress in fatalities over the last decade, research shows little progress regarding DUI behaviour
- | DUI behaviour (and attitudes) of Belgian car drivers are below EU average
- | Actions to take:
 - | Intensification of measures to combat drink driving: campaigns, police checks, diversification of sanctions (psycho-medical examinations, driver improvement courses, alcohol interlock programs,),...
 - | Intensification of research on determinants of drink driving: attitudes (cf. national survey series), social norms (study to be published soon), impact of type and severity of sanctions, ...



Further information

peter.silverans@bivv.be