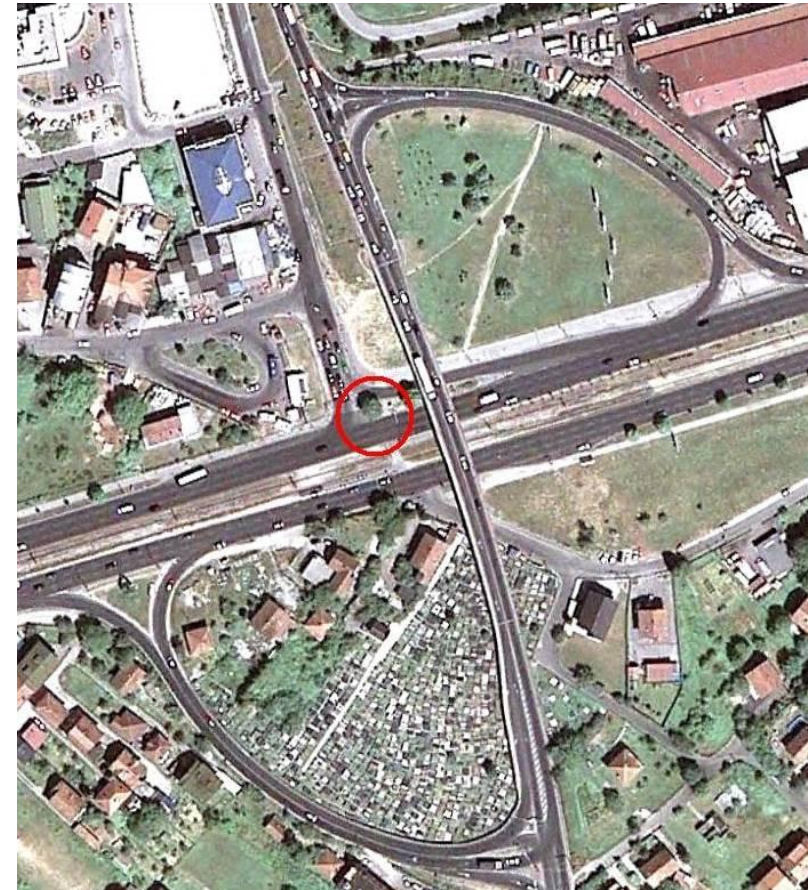
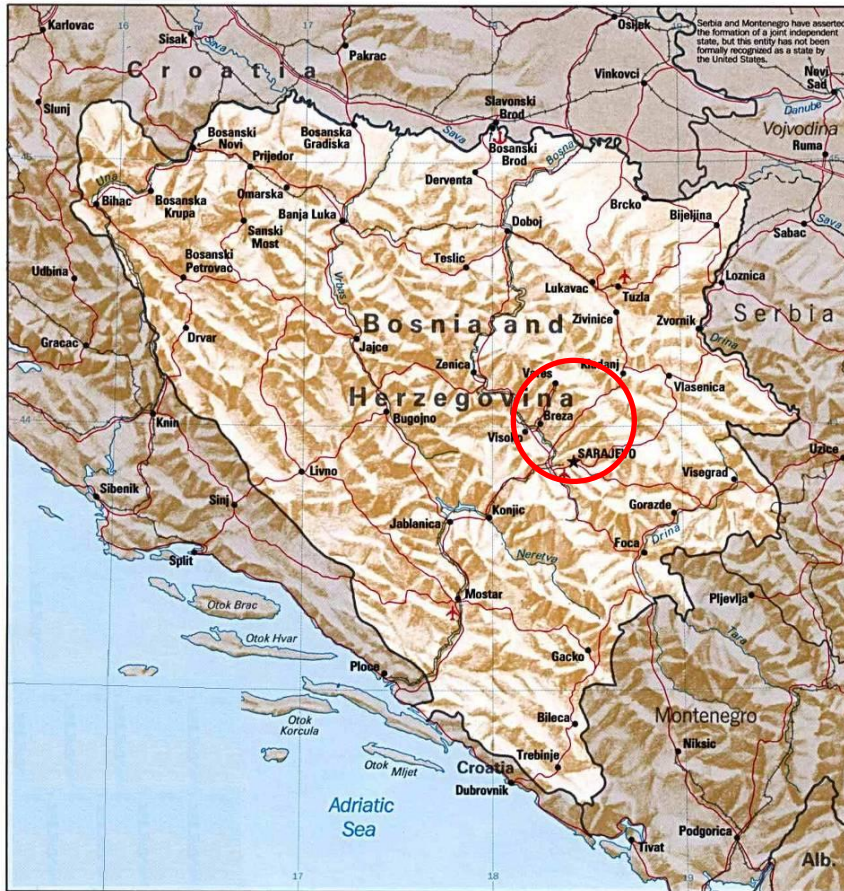


# R2R - Bosnia and Herzegovina

Proposal for a high risk site treatment

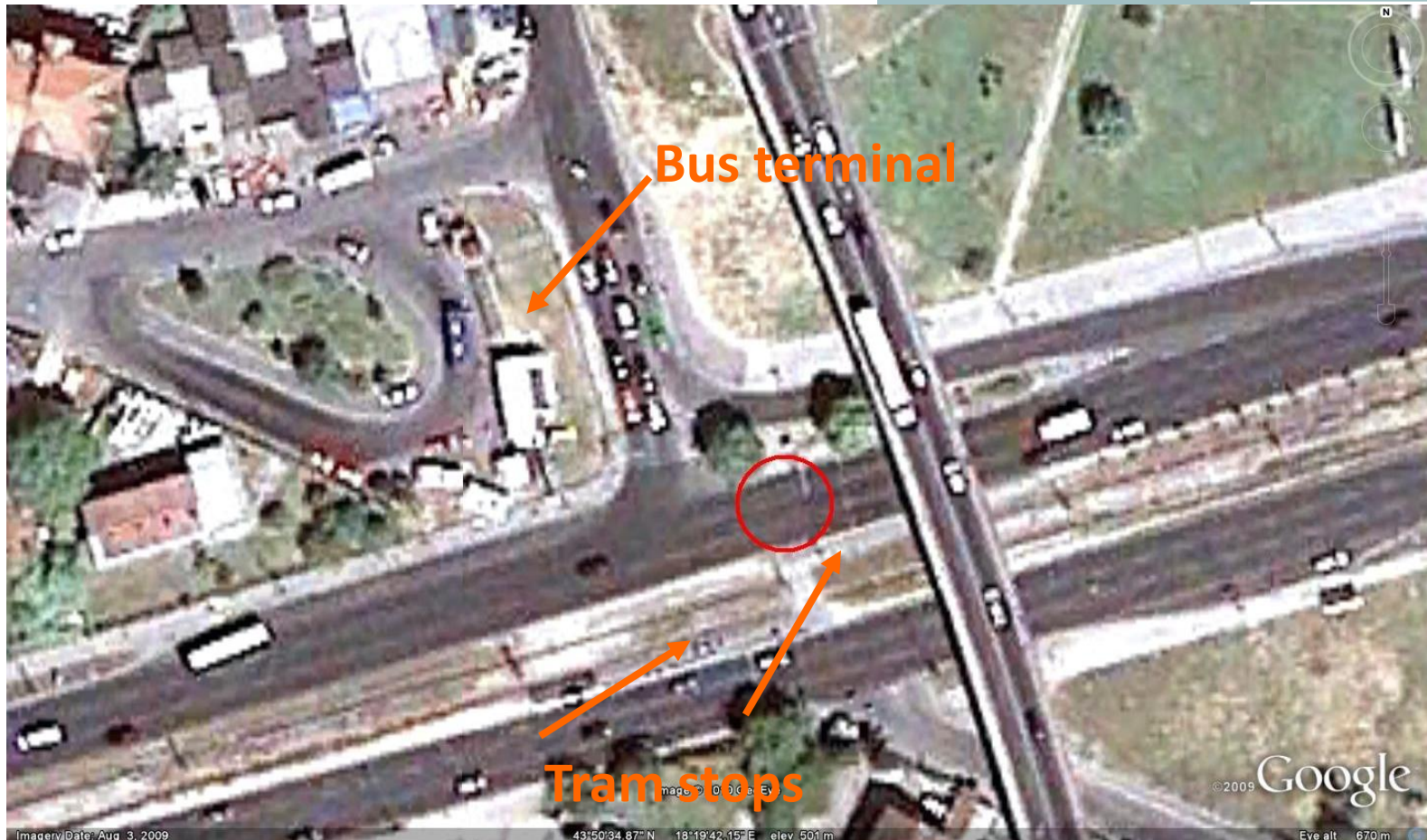
Boris Sakić (sakic.boris@gmail.com)  
Faculty of Traffic and Communication  
University of Sarajevo





Main features of the site are:

- T-shaped junction on an arterial road,
- The site is located between the 2nd largest bus terminal and two tram stops,
- High volume of pedestrians,
- High AADT (53.000 vehicles per day),



I have chosen this intersection because of:

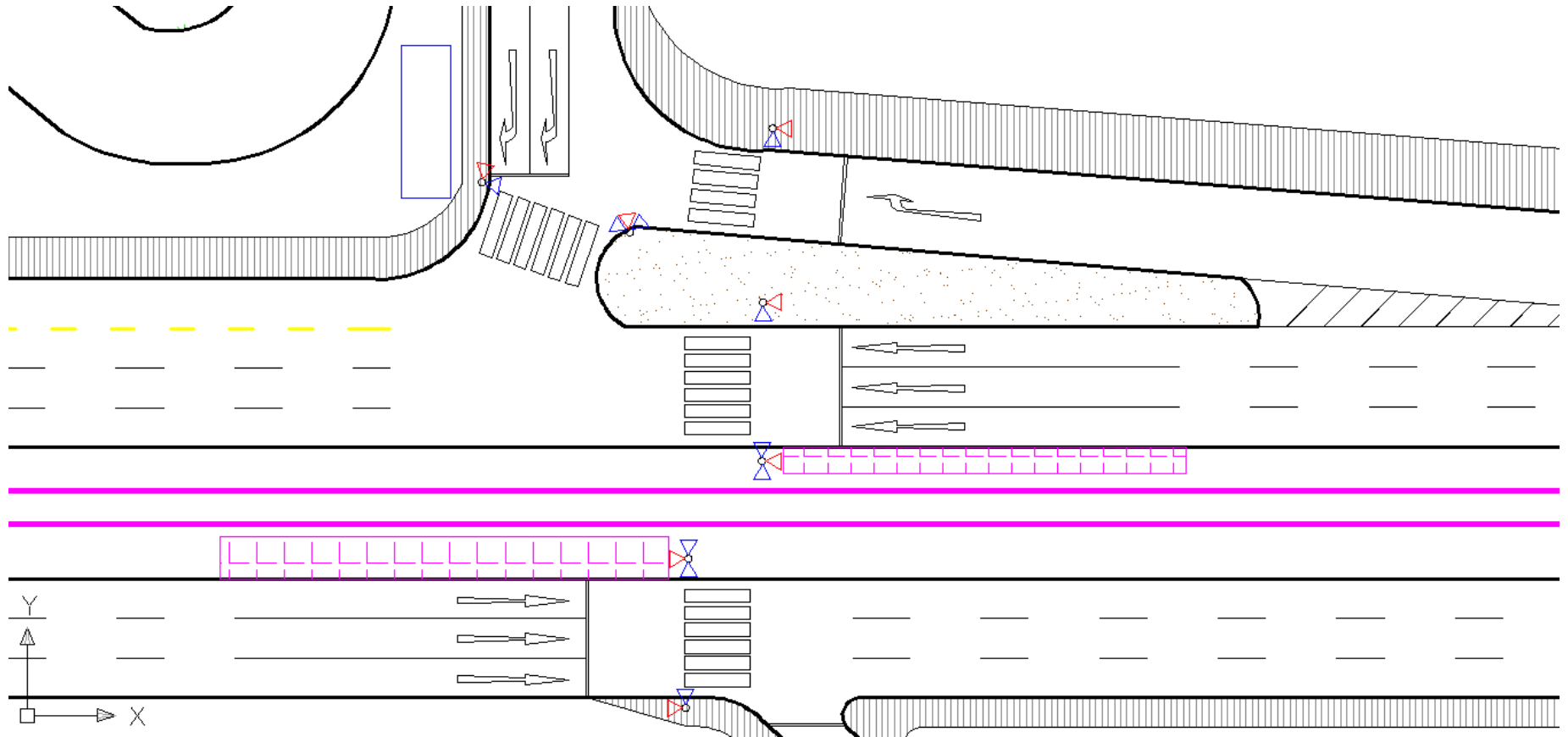
- Poor spatial design of pedestrian crossings.
- Pedestrians are at constant risk,
- Accidents data show a recurring number of accidents,
- Local authorities failed to recognize infrastructural component of the problem.

## *Road traffic accidents involving pedestrians*

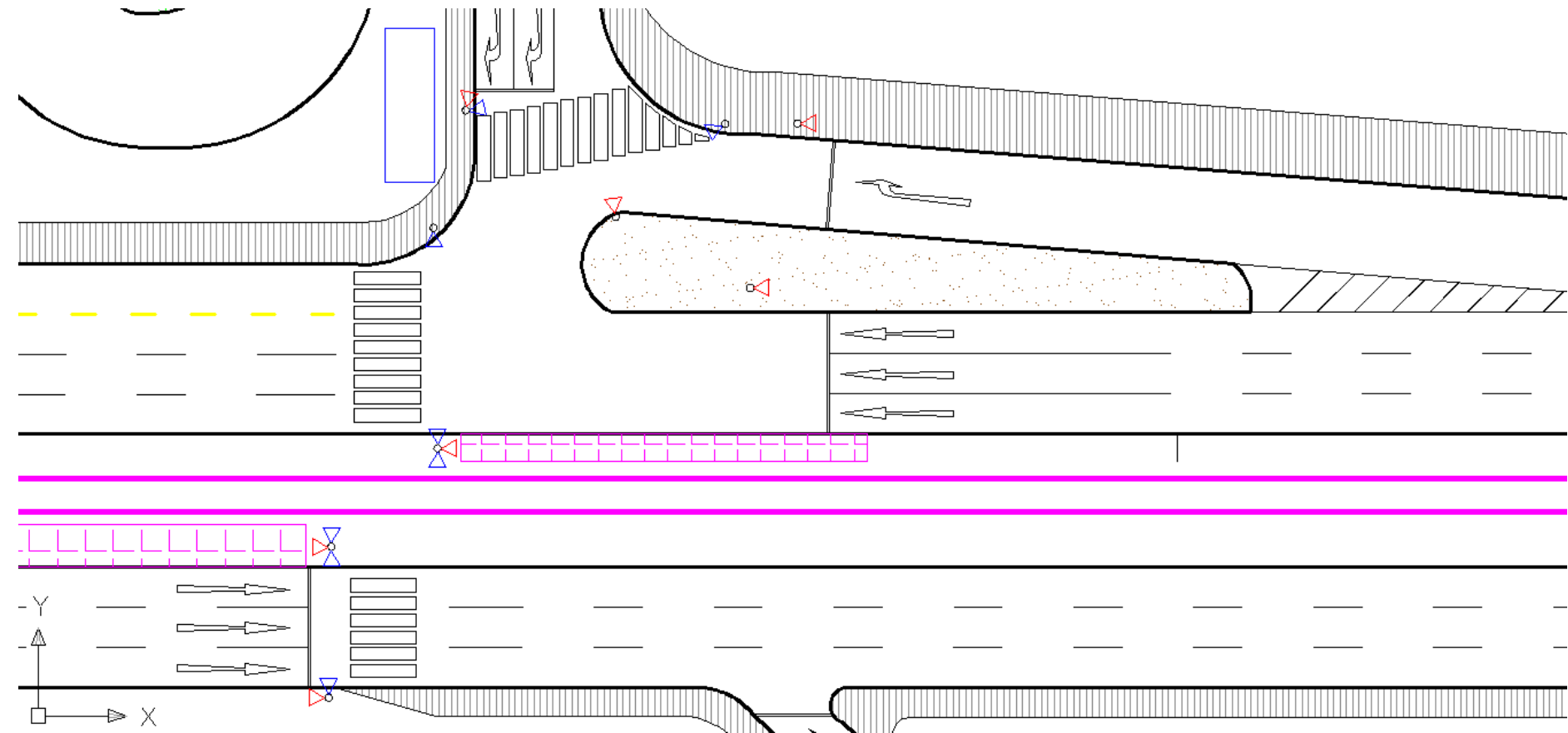
Year	Minor injuries	Severe injuries	Fatalaties	Total
2005	3	2	1	6
2006	1	2	0	3
2007	2	1	0	3
2008	3	1	1	5
2009	1	1	0	2
Total	10	7	2	19



# Current spatial design



# New spatial design



Measures to be taken:

- Alternation of pedestrian crossings (including traffic lights),
- Shiftment of tram stops
- Pedestrian island shut down

# Benefits of the new spatial design


- Higher level of safety for pedestrians,
- Reduction of distance and time needed for crossing from the bus terminal to tram stops and vice versa,
- Higher pedestrian flow

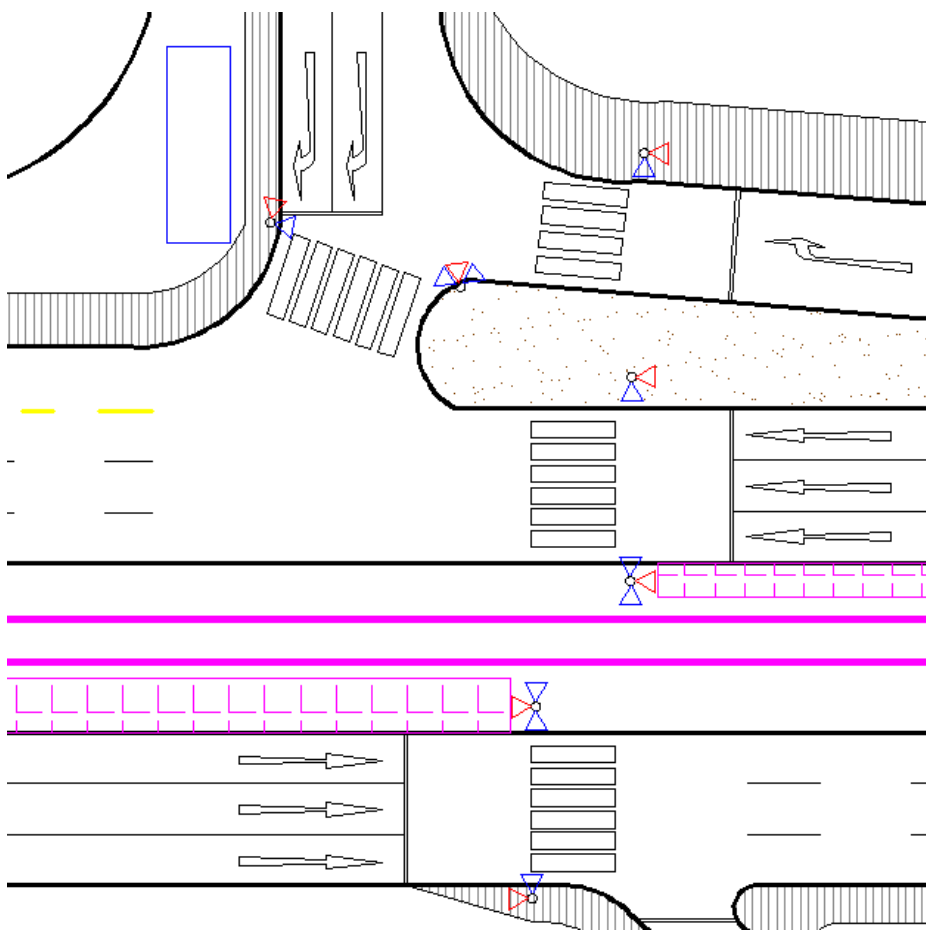
## Alternative proposal



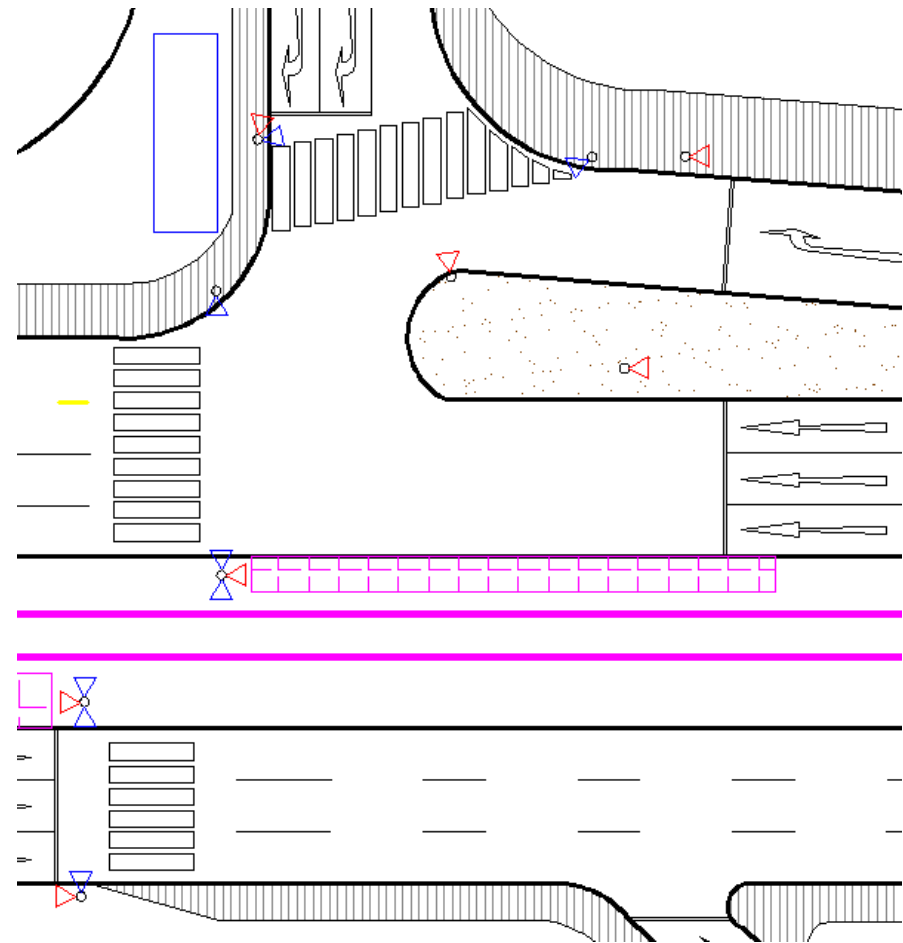


# The campaign plan<sup>?</sup>

1. Collect letters of recommendation (ETCS, university, association of engineers etc.),
  2. Develop the campaign,
  3. Contact media,
  4. Contact Ministry of Traffic,
  5. Contact public transport company,
  6. Contact traffic light maintenance company,
  7. Launch full scale campaign,
  8. Get job done!
- 
- Stakeholders



Before



After

Questions, comments, suggestions?

Thank you for your attention!